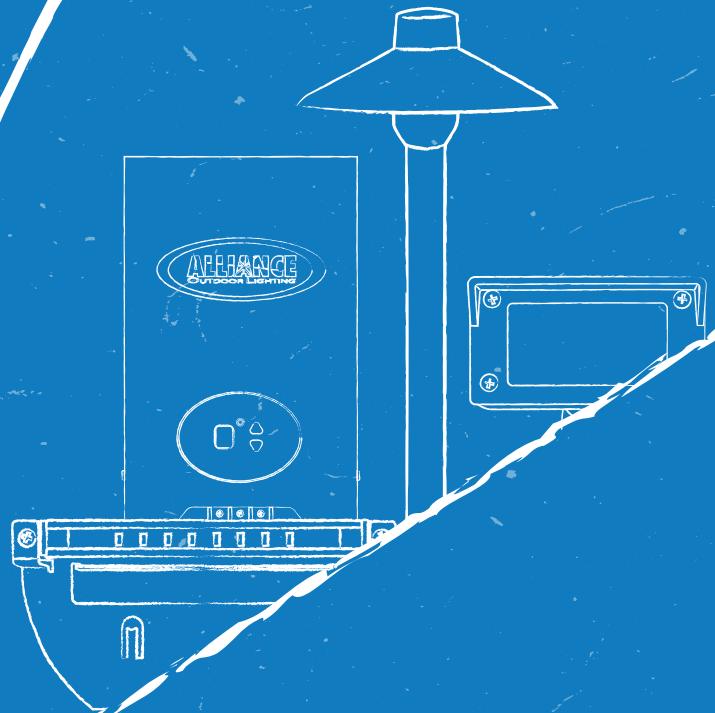
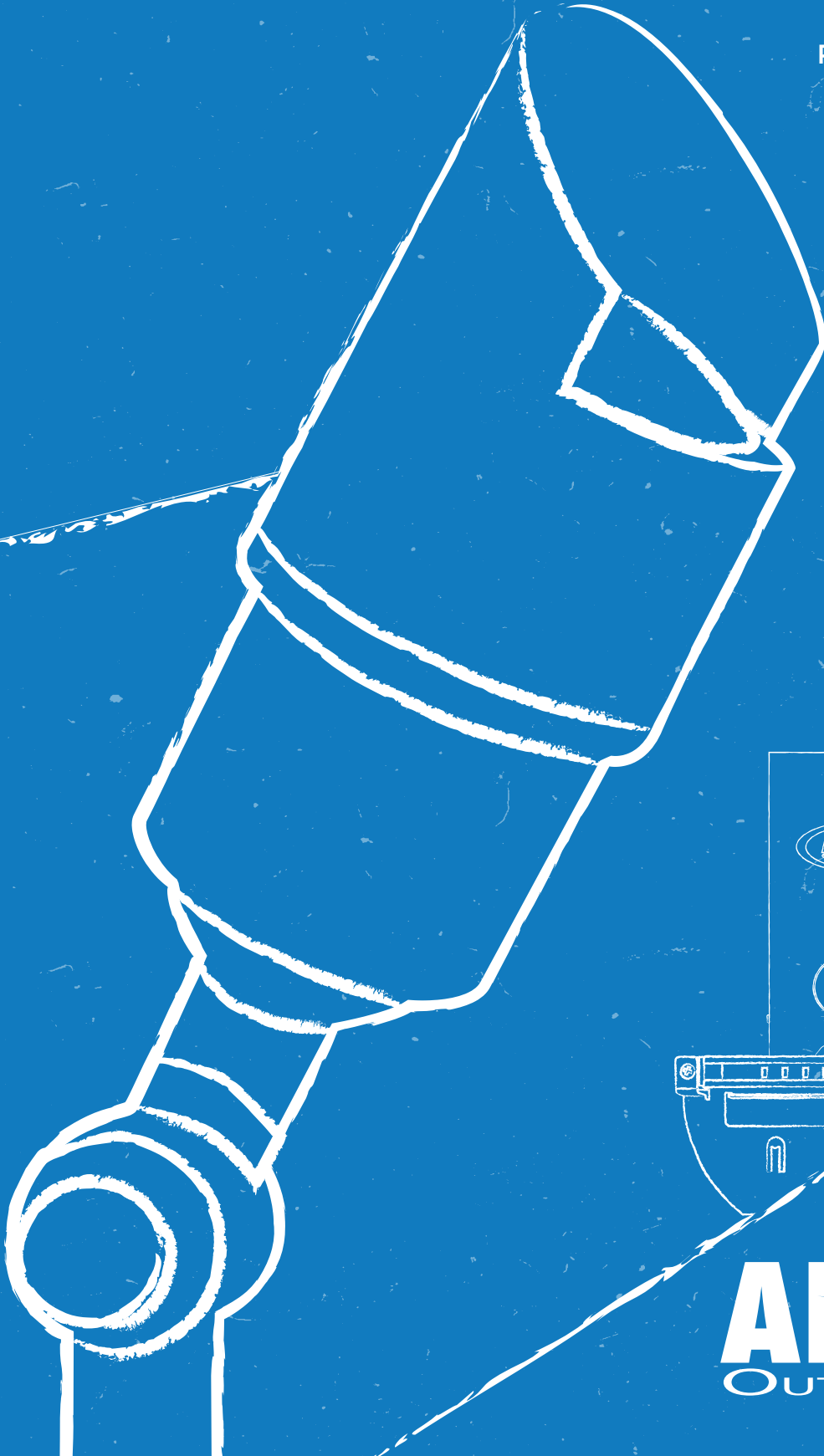


GET THE JOB DONE WITH THE
PRO SERIES

LIST PRICE GUIDE - 2025

Effective February 1, 2025
Prices and specifications subject
to change without notice.



ALLIANCE
OUTDOOR LIGHTING

Directional Lights	01
Path Lights	02
Hardscape	03
Lamps	04
Transformers+	05

DIRECTIONAL LIGHTS

BL115

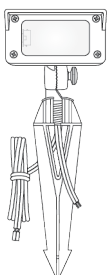


Part #	With No Lamp	Price \$	Finish	Price \$
BL115		56.74	Standard (Aged Brass)	+0.00
			-BLK (Black Overcoat)	+0.00

Description: Accent / Uplight, Cast Brass, Aged Brass Finish/Premium Black Overcoat, MR16 Socket (Lamp Not Included), Slotted 8.5" Ground Stake, Wire Lead (36")

To add optional finish, add the suffixes noted to the base part number. Example: BL115-BLK for a BL115 in black overcoat.

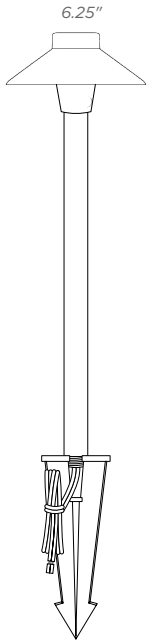
FL15



Part #	With No Lamp	Price \$	Finish	Price \$
FL15		72.10	Standard (Aged Brass)	+0.00
			-BLK (Black Overcoat)	+0.00

Description: Wall Wash Light, Cast Brass, Frosted Lens, Aged Brass Finish/Premium Black Overcoat, G4 Bi-Pin Socket (Lamp Not Included), Slotted 8.5" Ground Stake, Wire Lead (36")

PAL105

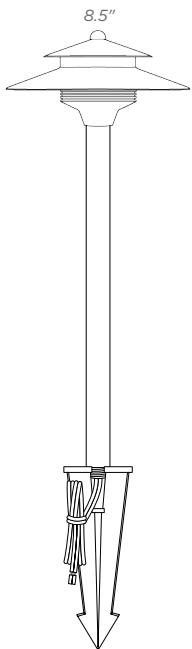


Part #	With No Lamp	Price \$	Finish	Price \$
PAL105		103.29	Standard (Aged Brass)	+0.00
			-BLK (Black Overcoat)	+0.00

Description: Area & Path Light, Cast Brass, Aged Brass Finish/Premium Black Overcoat, G4 Bi-Pin Socket (Lamp Not Included), 18" Stem, Slotted 8.5" Ground Stake, Wire Lead (36")

To add optional finish, add the suffixes noted to the base part number. Example: PAL105-BLK for a PAL105 in black overcoat.

PAL705

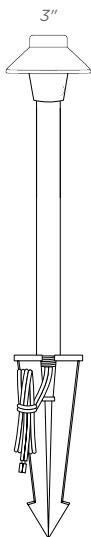


Part #	With No Lamp	Price \$	Finish	Price \$
PAL705		119.29	Standard (Aged Brass)	+0.00
			-BLK (Black Overcoat)	+0.00

Description: Area & Path Light, Cast Brass, Aged Brass Finish/Premium Black Overcoat, G4 Bi-Pin Socket (Lamp Not Included), 18" Stem, Slotted 8.5" Ground Stake, Wire Lead (36")

To add optional finish, add the suffixes noted to the base part number. Example: PAL705-BLK for a PAL705 in black overcoat.

PAL555



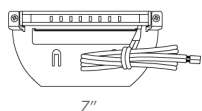
Part #	With No Lamp	Price \$	Finish	Price \$
PAL555		75.60	Standard (Aged Brass)	+0.00
			-BLK (Black Overcoat)	+0.00

Description: Area & Path Light, Cast Brass, Aged Brass Finish/Premium Black Overcoat, G4 Bi-Pin Socket (Lamp Not Included), 12" Stem, Slotted 8.5" Ground Stake, Wire Lead (36")

To add optional finish, add the suffixes noted to the base part number. Example: PAL555-BLK for a PAL555 in black overcoat.

HARDSCAPE

SL75-LED



Part #	Price \$	With LED Module	Finish Options	Price \$
SL75-LED	104.37	Integrated LED Module (300lm)	Standard (Aged Brass)	+0.00
			-BLK (Black Overcoat)	+0.00

Description: Ledge Light, Cast Brass Housing, 7" Width, Aged Brass Finish/Premium Black Overcoat, Integrated LED Module, Removable Mounting Plate, Wire Lead (10')

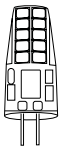
To add optional finish, add the suffixes noted to the base part number. Example: SL75-LED-BLK for a SL75-LED in black overcoat.

MR16 LED



Part #	Price \$	Wattage	Beam Angle	Delivered Lumens	Color Temp.	Base Color
E-LMR16-LED-4W	15.53	4W	Adjustable (25°,40°,55°)	250 Lumens	2900K	Black
E-LMR16-LED-5W	18.36	5.5W	Adjustable (25°,40°,55°)	250 Lumens	2900K	White
E-LMR16-LED-5W-4K	18.36	5.5W	Adjustable (25°,40°,55°)	250 Lumens	4000K	White

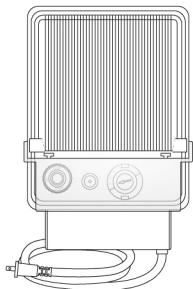
G4 BIPIN LED



Part #	Price \$	Wattage	Beam Angle	Delivered Lumens	Color Temp.
ELBIPIN-LED-250lm	11.44	2.5w	Full (360°)	250 Lumens	2700K

TF150

Part #	Price \$	Power Capacity	Construction
TF150	138.01	150 Watts	Black ABS Plastic



Description: Transformer, 150 Watt, Plastic Housing, Tap (12v), On-Board Photocell and Timer, Grounded Power Cord (5')

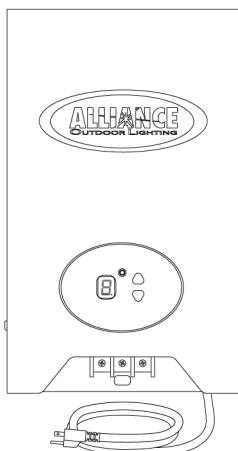
TF200 TF300

Part #	Price \$	Power Capacity	Construction
TF200	252.46	200 Watts	Heavy Duty Stainless Steel

Description: Transformer, 200 Watt, Stainless Steel, Tap (12v), On-Board Photocell and Digital Timer, Grounded Power Cord (5')

Part #	Price \$	Power Capacity	Construction
TF300	316.6	300 Watts	Heavy Duty Stainless Steel

Description: Transformer, 300 Watt, Stainless Steel, 2 Taps (12v, 14v), 1 Common Terminal, On-Board Photocell and Digital Timer, Grounded Power Cord (5')



A-LOC-50

Part #	Price \$	Quantity	Construction
A-LOC-50	77.52	50 Pieces	Blue ABS Plastic

Description: Fixture Installation Accessory, Locking Waterproof Splice with Crimp Sleeve, Container of 50



Alliance Outdoor Lighting warrants its products against defects in material and workmanship. Without charge, Alliance Outdoor Lighting will either repair or replace (Alliance Outdoor Lighting reserves the right to decide between repair or replacement) any properly installed Alliance Outdoor Lighting product that fails under normal operating conditions within the specified warranty period. Damage due to acts of nature, such as, but not limited to, lightning, flooding, explosions and earthquakes, are not covered.

PRODUCT WARRANTY DETAILS

BRASS, COPPER & BRONZE FIXTURES:

All have a lifetime warranty for all castings and housings.

IT2 SERIES TRANSFORMERS:

All IT2 series transformers carry a lifetime warranty on enclosures. All transformer windings carry a lifetime warranty.

XF SERIES TRANSFORMERS:

All XF series transformers carry a lifetime warranty on enclosures. All transformer windings carry a lifetime warranty.

TF SERIES TRANSFORMERS:

2 year warranty.

BT AND INTEGRATED LED FIXTURES

All Alliance LED integrated fixtures carry a 10 year warranty.

BT AND LED LAMPS:

10 year warranty.

ITIMERPRO:

10 year warranty.

TIMERS AND PHOTOCELLS:

Do not carry a warranty.

All products are warranted from the date of invoice, provided it is returned to the Alliance Outdoor Lighting distributor from where it is purchased. Our factory inspection determines it to be defective under the terms of the warranty. This warranty covers only equipment manufactured by Alliance Outdoor Lighting and does not extend to transportation, installation, labor compensation, or replacement charges, nor does it apply to any equipment of another manufacturer used in conjunction with Alliance Outdoor Lighting equipment.

NOTE: All Alliance Outdoor Lighting products are designed to be repaired in the field by a qualified lighting installer. All service parts are readily available and we encourage field repairs as a significant cost and labor savings which can be realized by the installer. All warranted components, as stated in the above warranty, which are installed in the field, will be honored.

