



PRODUCT CATALOG

2024 Landscape and Architectural Lighting

ALLIANCE
OUTDOOR LIGHTING

PICTORIAL INDEX OF FIXTURES

ACCENT/UPLIGHT



BL50
PG 9



BL110
PG 10



BL200
PG 11



HSC-BL1
PG 12



BL300
PG 13



BL395-LED
BL400-BT
PG 14



BL900
PG 15

AREA & PATH



BOLLARD100
PG 17



AL100
PG 18



AL150
PG 18



AL250
PG 18



AL300
PG 18



AL400
PG 18



AL500
PG 18



AL550
PG 18



AL700
PG 20



AL750
PG 20



AL800
PG 20



AL850
PG 20



PL100
PG 22



PL200
PG 23



PL250
PG 23



PL300
PG 24



PL600-LED
PG 25



HSC-PL1
PG 26



HSC-PL2
PG 27

WALL WASH



FL50
PG 47



FL100
PG 48



FL200
PG 49



DL50
PG 51



DL100
PG 52



DL200
PG 53



HL100
PG 54



HL200
PG 55

DOWN LIGHTS

PICTORIAL INDEX OF FIXTURES

IN-GROUND



GL100
PG 30



GL150
PG 30



GL160
PG 30



GL170
PG 30



GL180
PG 30



GL190
PG 30



GL300
PG 32



GL310
PG 32



GL350
PG 32



GL360
PG 32



GL370
PG 32



GL380
PG 32



GL390
PG 32



CGWL01
PG 34



WL100
PG 34



WL200
PG 34



WL300
PG 29



CGWL02
WL400-BT
WL495-LED
PG 35

HARDSCAPE



SL100
PG 37



SL150
PG 37



SL65-LED
PG 38



SL75-LED
PG 38



SL85-LED
PG 38



SL60-BT
PG 39



SL70
PG 39



SL80-BT
PG 39



SL25-LED
PG 40



SL26-LED
PG 40



SL35-LED
PG 40



SL36-LED
PG 40



SL200
PG 41



SL300
PG 41



POST50
PG 42



POST100
PG 42



TAPE-LED
PG 43



WS100/WS200
PG 44



WS350-BT
PG 45

SPECIALTY



UL100
PG 60



UL395-LED
PG 61



ML15-LED
PG 58



ML25-LED
PG 58



ML35-LED
PG 59



ML65
PG 59



GOLF50-BT
PG 62



GOLF 100
PG 63



TIKI
ALSTEM60
PG 57

MORE

Power and Control
PG 64

BT System
PG 70

Installation Accessories
PG 76

Lamps
PG 78

Demo Kit
PG 82

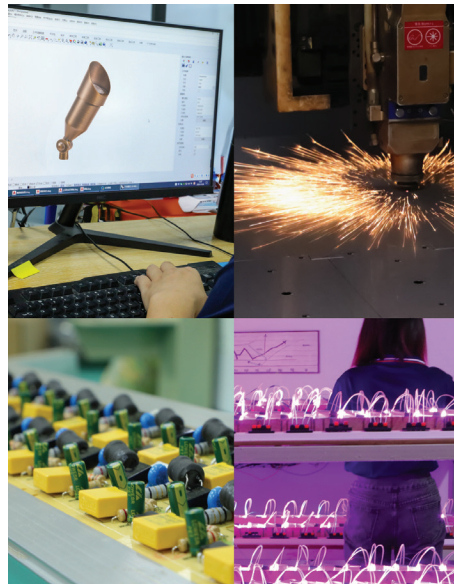
ALLIANCE SUPPORTS DO MORE,

A SIMPLER PRODUCT LINE THAT'S SIMPLY BETTER

We don't overwhelm you with too many choices. Alliance brings you exactly what you need - a full family of professional fixtures for every outdoor application. Plus, our designs are loaded with special features and conveniences that make installation faster and easier. Our modular components are easier for distributors to stock, so contractors get what they need locally immediately.



YOUR SUCCESS DO IT BETTER



UNMATCHED FIELD SUPPORT FROM LIGHTING EXPERTS

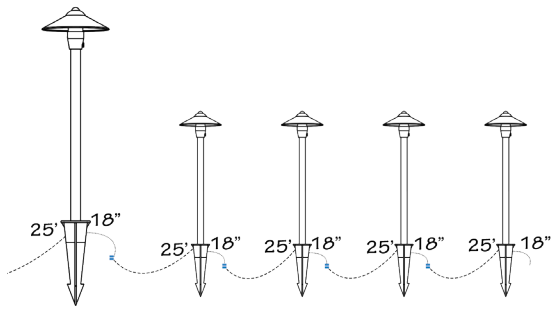
Alliance's team of regional lighting experts support your success through comprehensive training, design ideas, in-the-field site visits and more. These trusted resources provide seamless solutions to your challenges, while also attentively considering your suggestions and effectively communicating them to our factory for continual improvement.

IN-HOUSE DESIGN, MANUFACTURING AND TESTING

While others outsource manufacturing to multiple factories and job-shops, we own our own facilities in the US and overseas, carefully controlling every step of the process for superior results. We do the hard work ourselves, building durability, quality and longevity into each Alliance product.

FAMILY-OWNED WITH HANDS-ON LEADERSHIP

Landscape lighting is our passion, and our owners and their families are actively engaged in the business every day. We're a small business, not a Wall Street conglomerate, so we have a lot in common with our customers. **Your success is our success.**



Daisy Chain Method- Connect the long lead of one fixture to the short lead of the next fixture.

INDUSTRY'S FIRST DOUBLE WIRE LEAD SYSTEM

Saves time and money. Exclusive to Alliance since 2012, the double wire (one 25', the other 18") allows you to daisy chain wire between fixtures, up to 25' feet apart. Dramatically reduces the additional wire needed for the project.



Black overcoat is applied to brass base.

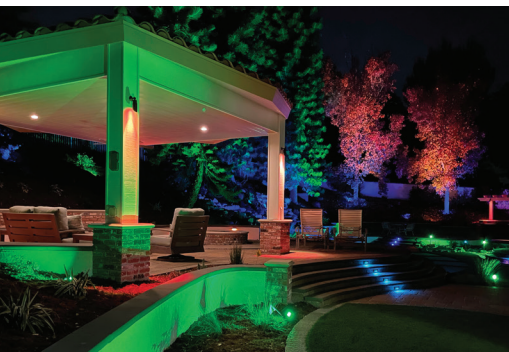
PREMIUM BLACK OVERCOAT

Alliance does black fixtures better, for a lifetime finish. Our Premium Black Overcoat is applied to a BRASS fixture housing (not aluminum) so it's inherently corrosion-resistant in harsh environments. If the fixture is nicked or scratched by maintenance equipment, there's no chance of destructive corrosion and blistering of the finish common in aluminum fixtures.



ALLIANCE BT SYSTEM: PAINT THE LANDSCAPE WITH LIGHT

Move beyond simple on/off control to advanced capabilities that put a landscape into a whole new light. Alliance's BT system brings a wide suite of capabilities in a system that is easy and economical to install. It does not require a specific controller or transformer, and provides a large suite of benefits including dimming, color temperature control, RGB color control and custom scenes.





CONTENTS

Accent /Uplight	8	Specialty	56
Area & Path	16	Power & Control	64
In-Ground	28	BT System	70
Hardscape	36	Accessories	76
Wall Wash	46	Lamps	78
Down Lights	50	Demo Kit	82



ACCENT/UPLIGHT

Precise aiming creates dramatic lighting effects



BL50

Extra small accent light that is easy to conceal, yet packs a strong lighting punch.

FINISH



Aged Brass
(Standard)

DIMENSIONS

HEIGHT	1.75"
LENGTH/DEPTH	6"
WIDTH	1.75"

MOUNTING / INSTALLATION

Wire Lead

Dual 16AWG wire leads (option to daisy chain), first 25', second 18".

Mounting

Slotted 8" ground stake (standard), Options: canopy surface mount, gutter mount, Permapost heavy-duty stake, fixed solid brass risers, adjustable brass riser. See page 76 for details.

MATERIAL & FINISH

Housing

Solid cast brass.

Knuckle

Solid cast brass, knob for angle adjustment.

Socket

Spring-loaded ceramic bi-pin MR-11, with dual contacts and lamp clips.

Shroud & Lens

Solid cast brass, with o-ring seal, with convex tempered, shock-resistant glass lens.

LIGHT SOURCE OPTIONS

Choose factory-installed MR-11 LED lamp below. Also available without lamp.

FACTORY-INSTALLED LAMP OPTION

ADD-SUFFIX	WATTAGE	BEAM ANGLE	DELIVERED LUMENS	COLOR TEMPERATURE
-LED	4	45	175	2900K

HOW TO SPECIFY

FIXTURE	CHOOSE LIGHT SOURCE	ORDER ACCESSORIES
BL50	-LED Add suffix for lamp (see above) (blank for no lamp)	Mounting (see page 76) Risers (see page 77) Lenses (see page 81)

Example: BL50-LED





BL110

Sleek linear design with adjustable shroud. A highly-versatile workhorse fixture.

FINISH OPTIONS



Aged Brass
(Standard)



Premium Black
Overcoat
(Optional)

DIMENSIONS

HEIGHT	1.75"
LENGTH/DEPTH	7.5"
WIDTH	2.25"

MOUNTING / INSTALLATION

Wire Lead	Dual 16AWG wire leads (option to daisy chain), first 25', second 18".
Mounting	Slotted 8" ground stake (standard), Options: canopy surface mount, gutter mount, Permapost heavy-duty stake, fixed solid brass risers, adjustable brass riser. See page 76 for details.

MATERIAL

Housing	Solid cast brass.
Knuckle	Solid cast brass, knob for angle adjustment.
Socket	Spring-loaded ceramic bi-pin MR16, with dual contacts and lamp clips.
Shroud & Lens	Solid cast brass, with dual o-ring seal, with convex tempered, shock-resistant glass lens.
Optional Lenses	Frosted lens, hex louver.

LIGHT SOURCE OPTIONS

Choose factory-installed MR16 lamp below. Also available without lamp.

FACTORY-INSTALLED LAMP OPTIONS

ADD-SUFFIX	WATTAGE	BEAM ANGLE	DELIVERED LUMENS	COLOR TEMPERATURE	BASE COLOR CODE
-LED4W-NS	4	15	250	2900K	BLACK
-LED4W	4	45	250	2900K	BLACK
-LED4W-WF	4	60	250	2900K	BLACK
-LED5W-NS	5	15	310	2900K	WHITE
-LED5W	5	45	310	2900K	WHITE
-LED5W-WF	5	60	310	2900K	WHITE
-LED6W	6	45	400	2900K	BLUE

HOW TO SPECIFY

FIXTURE	FINISH OPTION	CHOOSE LIGHT SOURCE	ORDER ACCESSORIES
BL110	-BLK for black overcoat (blank for aged brass finish)	-LED Add suffix for lamp (see above) (blank for no lamp)	Mounting (see page 76) Risers (see page 77) Lenses (see page 81)

Example: BL110-BLK-LED5W



BL200



Our most versatile and popular uplight, with numerous options for lamps, mounting options and optional color-tunable, dimmable Bluetooth® LED module.

FINISH OPTIONS



Aged Brass
(Standard)



Premium Black
Overcoat
(Optional)

DIMENSIONS

HEIGHT	1.75"
LENGTH/DEPTH	7.25"
WIDTH	2.5"

MOUNTING / INSTALLATION

Wire Lead	Dual 16AWG wire leads (option to daisy chain), first 25', second 18".
Mounting	Slotted 8" ground stake (standard), Options: canopy surface mount, gutter mount, Permapost heavy-duty stake, fixed solid brass risers, adjustable brass riser. See page 76 for details.

MATERIAL

Housing	Solid cast brass.
Knuckle	Solid cast brass, knob for angle adjustment.
Socket	Spring-loaded ceramic bi-pin MR16, with dual contacts and lamp clips.
Shroud & Lens	Solid cast brass, with dual o-ring seal, with convex tempered, shock-resistant glass lens.
Optional Lenses	Frosted lens, hex louver.

LIGHT SOURCE OPTIONS

Choose factory-installed MR16 lamp below, or factory-installed Bluetooth® module. Also available without lamp.

FACTORY-INSTALLED LAMP OPTIONS

ADD-SUFFIX	WATTAGE	BEAM ANGLE	DELIVERED LUMENS	COLOR TEMPERATURE	BASE COLOR CODE
-LED4W-NS	4	15	250	2900K	BLACK
-LED4W	4	45	250	2900K	BLACK
-LED4W-WF	4	60	250	2900K	BLACK
-LED5W	5	15	310	2900K	WHITE
-LED5W-F	5	45	310	2900K	WHITE
-LED5W-WF	5	60	310	2900K	WHITE
-LED6W	6	45	400	2900K	BLUE

FACTORY-INSTALLED RGB LED BLUETOOTH® MODULE

Wattage: 2w - 4w, **Lumen Output:** 10lm - 430lm **Beam Spread:** 40°
CCT Options: 2700K, 3000K, 4000K **RGB Options:** unlimited color wheel, quick preset options for red, green, blue, amber and purple
Dimming: option available for every color choice.

HOW TO SPECIFY

FIXTURE	FINISH OPTION	CHOOSE LIGHT SOURCE	ORDER ACCESSORIES
BL200	-BLK for black overcoat (blank for aged brass finish)	-LED Add suffix for lamp (see above) -BT for Bluetooth® RGBW module	Mounting (see page 76) Risers (see page 77) Lenses (see page 81)

Example: BL200-BLK-LED5W



HSC-BL1

For applications where the client desires the chunky, thick appearance of a sand-cast bronze fixture, our HSC series is a superior choice. Like all Alliance fixtures, its rugged construction will ensure long life.

FINISH OPTIONS



Sand-Cast Bronze
(Standard)

DIMENSIONS

HEIGHT	2.5"
LENGTH/DEPTH	6.5"
WIDTH	2.5"

MOUNTING / INSTALLATION

Wire Lead 25' 16AWG wire lead.
Mounting Cast bronze 8.5" ground stake (standard).

MATERIAL

Housing Solid bronze, with solid bronze shroud.
Knuckle Bronze, adjustable for precision aiming.
Socket Spring-loaded ceramic bi-pin MR16, with dual contacts and lamp clips.
Shroud & Lens Solid bronze, with dual o-ring seal, with convex tempered, shock-resistant glass lens.
Optional Lenses Frosted lens, hex louver.

LIGHT SOURCE OPTIONS

Choose factory-installed MR16 lamp below.
 Also available without lamp.

FACTORY-INSTALLED LAMP OPTIONS

ADD-SUFFIX	WATTAGE	BEAM ANGLE	DELIVERED LUMENS	COLOR TEMPERATURE	BASE COLOR CODE
-LED4W-NS	4	15	250	2900K	BLACK
-LED4W	4	45	250	2900K	BLACK
-LED4W-WF	4	60	250	2900K	BLACK
-LED5W-NS	5	15	310	2900K	WHITE
-LED5W	5	45	310	2900K	WHITE
-LED5W-WF	5	60	310	2900K	WHITE
-LED6W	6	45	400	2900K	BLUE

HOW TO SPECIFY

FIXTURE	CHOOSE LIGHT SOURCE	ORDER ACCESSORIES
HSC-BL1	-LED Add suffix for lamp (see above) (blank for no lamp)	Lenses (see page 81)

Example: HSC-BL1-LED5W



Includes sand-cast bronze stake



BL300

Maximum impact powerful directional lighting from a PAR36 lamp with numerous options for lamps, mounting options.

FINISH OPTIONS



Aged Brass
(Standard)



Premium Black
Overcoat
(Optional)

DIMENSIONS

HEIGHT	1.75"
LENGTH/DEPTH	4.25"
WIDTH	5"

MOUNTING / INSTALLATION

Wire Lead Dual 16AWG wire leads (option to daisy chain), first 25', second 18".

Mounting Slotted 8.5" large ground stake (standard), Options: canopy surface mount, gutter mount, Permapost heavy-duty stake, fixed solid brass risers, adjustable brass riser. See page 76 for details.

MATERIAL

Housing Solid brass.

Knuckle Solid cast brass, knob for angle adjustment.

Socket Spade connectors for LPAR36 lamps.

Shroud Solid cast brass, with turn-to-lock fitting.

LIGHT SOURCE OPTIONS

Choose factory-installed PAR-36 lamp below. Also available without lamp.

FACTORY-INSTALLED LAMP OPTIONS

ADD-SUFFIX	WATTAGE	BEAM ANGLE	DELIVERED LUMENS	COLOR TEMPERATURE	COLOR CODE
-LED4W-F	4	20	250	2800K	GRAY
-LED4W	4	40	250	2800K	GRAY
-LED8W-F	8	20	300	2800K	BLACK
-LED8W	8	40	300	2800K	BLACK
-LED10W-F	10	30	400	2800K	BLUE
-LED10W	10	45	400	2800K	BLUE

HOW TO SPECIFY

FIXTURE	FINISH OPTIONS	CHOOSE LIGHT SOURCE	ORDER ACCESSORIES
BL300	-BLK for black overcoat (blank for aged brass finish)	-LED Add suffix for lamp (see above) (blank for no lamp)	Mounting (see page 76) Risers (see page 77) Lenses (see page 81)

Example: BL300-BLK-LED10W



BL395-LED BL400-BT HIGH LUMEN OUTPUT



Powerful integrated LED fixture for maximum impact directional accent lighting. Model BL395 has integrated soft white LED. Model BL400-BT has integrated RGBW LED.

FINISH



Aged Brass
(Standard)

DIMENSIONS

HEIGHT	1.75"
LENGTH/DEPTH	4.25"
WIDTH	5"

MOUNTING / INSTALLATION

Wire Lead Dual 16AWG wire leads (option to daisy chain), first 25', second 18".

Mounting Slotted 8.5" large ground stake (standard), Options: canopy surface mount, gutter mount, Permapost heavy-duty stake, fixed solid brass risers. Adjustable brass riser. See page 81 for details.

MATERIAL

Housing Solid cast brass.

Knuckle Solid cast brass, knob for angle adjustment.

Shroud Solid cast brass, with turn-to-lock fitting.

MODEL BL395-LED INTEGRATED LED

Integrated LED: 11 watts, 1200 lumens, 40 degree flood, 3000K.

MODEL BL400-BT FACTORY-INSTALLED RGB LED BLUETOOTH® MODULE

Wattage: 4w - 11w, **Lumen Output:** 15lm - 900lm **Beam Spread:** 40°
CCT Options: 2700K, 3000K, 4000K **RGB Options:** unlimited color wheel, quick preset options for red, green, blue, amber and purple
Dimming: option available for every color choice.

HOW TO SPECIFY

FIXTURE	CHOOSE LIGHT SOURCE	ORDER ACCESSORIES
BL395-LED	Integrated LED, soft white	Mounting (see page 76) Risers (see page 77)
BL400-BT	Bluetooth® RGBW module	



High lumen output ideal for lighting tall trees.



BL900



A fully-adjustable shroud adds versatility to this sleek, heavy-duty fixture with numerous options and an optional color-tunable, dimmable Bluetooth® LED module.

FINISH



Aged Brass
(Standard)

DIMENSIONS

HEIGHT	1.75"
LENGTH/DEPTH	7.3"
WIDTH	2.25"

MOUNTING / INSTALLATION

Wire Lead	Dual 16AWG wire leads (option to daisy chain), first 25', second 18".
Mounting	Slotted 8" ground stake (standard), Options: canopy surface mount, gutter mount, Permapost heavy-duty stake, fixed solid brass risers, adjustable brass riser. See page 76 for details.

MATERIAL

Housing	Solid cast brass.
Knuckle	Solid cast brass, knob for angle adjustment.
Socket	Spring-loaded ceramic bi-pin MR16, with dual contacts and lamp clips.
Shroud & Lens	Solid cast brass, with convex tempered, shock-resistant glass lens.
Optional Lenses	Frosted lens, hex louver.

FACTORY-INSTALLED LAMP OPTIONS

ADD-SUFFIX	WATTAGE	BEAM ANGLE	DELIVERED LUMENS	COLOR TEMPERATURE	BASE COLOR CODE
-LED4W-NS	4	15	250	2900K	BLACK
-LED4W	4	45	250	2900K	BLACK
-LED4W-WF	4	60	250	2900K	BLACK
-LED5W-NS	5	15	310	2900K	WHITE
-LED5W	5	45	310	2900K	WHITE
-LED5W-WF	5	60	310	2900K	WHITE
-LED6W	6	45	400	2900K	BLUE

FACTORY-INSTALLED RGB LED BLUETOOTH® MODULE

Wattage: 2w - 4w, Lumen Output: 10lm - 430lm Beam Spread: 40°
CCT Options: 2700K, 3000K, 4000K RGB Options: unlimited color wheel, quick preset options for red, green, blue, amber and purple
Dimming: option available for every color choice.

HOW TO SPECIFY

FIXTURE	CHOOSE LIGHT SOURCE	ORDER ACCESSORIES
BL900	-LED Add suffix for lamp (see above) -BT for Bluetooth® RGBW module	Mounting (see page 76) Risers (see page 77) Lenses (see page 81)

Example: BL900-LED4W



Adjustable shroud allows beam and glare control.



AREA & PATH

Allow safe passage after dark while enhancing the landscape



BOLLARD100

Handsome lighted directional bollard equally suitable for estate-type residential, commercial and institutional pedestrian spaces. Low voltage design easily retrofits to existing landscapes to visually guide visitors without the expense of new line-voltage electrical circuits.

FINISH OPTIONS



Aged Brass
(Standard)



Premium Black
Overcoat
(Optional)

DIMENSIONS

BASE HEIGHT	29.5"
BASE WIDTH	5"
TOP HEIGHT	7.5"
TOP WIDTH	6"

MOUNTING / INSTALLATION

Wire Lead	36" 16AWG wire lead.
Mounting	Stainless steel mounting base with three anchor L-bolts for installation into a poured concrete footing. For best results, footing should be higher than finished grade to protect fixture base from trimmers in lawn areas.
Material	Solid brass 3-tier cover and louvers. Stainless steel post with aged brass finish.
Lens	Frosted polycarbonate lens recommended and provided. Clear lens also provided.
Lamp Socket	G4 Bi-Pin, Spring-loaded ceramic, with dual contacts.
Light Source	Standard LBIPIN-LED-350lm 3.5 watt 2700K supplied. Optional no lamp.

HOW TO SPECIFY

MODEL	FINISH OPTIONS	CHOOSE LIGHT SOURCE
BOLLARD100	-BLK for black overcoat (blank for aged brass finish)	- LED for LBIPIN-LED-350lm 3.5 watt 2700K lamp

Example: BOLLARD100-BLK-LED





AL100

Recommended for use with
18" and 24" stem.
Height: 2.5"
Width: 6.75"



AL150

Recommended for use with
12" and 18" stem.
Height: 2"
Width: 6.25"



AL250

Recommended for use with
18" and 24" stem.
Height: 2"
Width: 7.75"



AL300

Recommended for use with
12" and 18" stem.
Height: 2"
Width: 6.25"



AL400

Recommended for use with
18" and 24" stem.
Height: 4.75"
Width: 7.5"



AL500

Recommended for use with
12" and 18" stem.
Height: 2.5"
Width: 5"

FINISH OPTIONS



Aged Brass
(Standard)



Premium Black
Overcoat
(Optional)



AL550

Recommended for use with
12" and 18" stem.
Height: 3.5"
Width: 1.5"

CUSTOMIZE YOUR STEM AND HAT COMBO

Designed for easy inventory, and mix-and-match design flexibility, our area lights are ordered in two components:

- 1** Choose your desired “hat” or top (see options page 18 and page 20)
- 2** Then choose your stem height and light source (standard LED lamp or BT Bluetooth® RGB module)



Hat and stem sold separately

STEM OPTIONS - STANDARD LED OR NO LAMP

PART NUMBER	HEIGHT	LED LAMP INSTALLED
ALSTEM12-LED	12"	LBIPIN-LED-200LM 2.5 WATT 2700K
ALSTEM18-LED	18"	LBIPIN-LED-200LM 2.5 WATT 2700K
ALSTEM24-LED	24"	LBIPIN-LED-200LM 2.5 WATT 2700K
ALSTEM12	12"	NO LAMP
ALSTEM18	18"	NO LAMP
ALSTEM24	24"	NO LAMP
ALSTEMADJ-LED	18"-29" (ADJ.)	LBIPIN-LED-200LM 2.5 WATT 2700K
ALSTEMADJ	18"-29" (ADJ.)	NO LAMP

STEM OPTIONS - RGB LED BLUETOOTH® MODULE

PART NUMBER	HEIGHT	LED LAMP INSTALLED
ALSTEM12-BT	12"	BT SYSTEM LED MODULE
ALSTEM18-BT	18"	BT SYSTEM LED MODULE

Wattage: 2w - 6w **Lumen Output:** 10lm - 350lm **CCT Options:** 2700K, 3000K, 4000K **RGB Options:** Unlimited color wheel, with preset options for red, green, blue, amber and purple **Dimming:** Available for every color choice

SPECIFICATIONS

Lead Wire Length	Dual 16AWG wire leads (option to daisy chain), first 25', second 18"
Mounting	Slotted 8.5" large ground stake (standard). Optional surface mount canopy or Permapost heavy-duty stake. See page 76 for details.
Material	Solid cast brass (hat and stem)
Lens	Polycarbonate plastic lens with rubber gaskets both clear and frosted provided
Socket	G4 Bi-Pin, Spring-loaded ceramic, with dual contacts and lamp clips
Adjustable Beam	Stem incorporates adjustable collar or light spread and glare control

HOW TO SPECIFY

SELECT FIXTURE HAT	SELECT STEM	FINISH OPTIONS
EXAMPLE: AL300	EXAMPLE: ALSTEM18-BT	-BLK for black overcoat (blank for aged brass finish)

Example: AL300-BLK, ALSTEM18-BT-BLK | See more mounting options, page 76.



12" Available -BLK
 18" Available -BLK
 24"
 18-29" (Adjustable)



AL700

Recommended for use with 18" and 24" stem.
Height: 4.5"
Width: 8.5"



AL800

Recommended for use with 18" and 24" stem.
Height: 3.5"
Width: 12"



AL750

Recommended for use with 18" and 24" stem.
Height: 3.75"
Width: 9"



AL850

Recommended for use with 18" and 24" stem.
Height: 4.25"
Width: 8"

The Area and Path Hats on this page will not fit the 12" or 18" ALSTEM-BT Bluetooth® stems.

FINISH

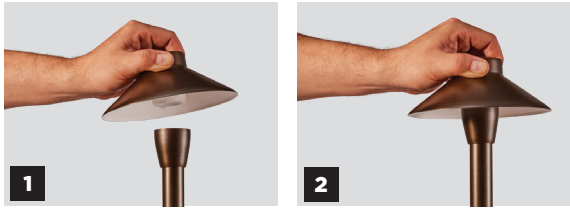


Aged Brass
(Standard)

CUSTOMIZE YOUR STEM AND HAT COMBO

Designed for easy inventory, and mix-and-match design flexibility, our area lights are ordered in two components:

- 1** Choose your desired “hat” or top (see options page 18 and page 20)
- 2** Then choose your stem height.



Hat and stem sold separately

STEM OPTIONS - STANDARD LED

PART NUMBER	HEIGHT	LED LAMP INSTALLED
ALSTEM18-LED	18"	LBIPIN-LED-200LM 2.5 WATT 2700K
ALSTEM24-LED	24"	LBIPIN-LED-200LM 2.5 WATT 2700K
ALSTEM18	18"	NO LAMP
ALSTEM24	24"	NO LAMP
ALSTEMADJ-LED	18"-29" (ADJ.)	LBIPIN-LED-200LM 2.5 WATT 2700K
ALSTEMADJ	18"-29" (ADJ.)	NO LAMP

SPECIFICATIONS

Lead Wire Length	Dual 16AWG wire leads (option to daisy chain), first 25', second 18"
Mounting	Slotted 8.5" large ground stake (standard). Optional surface mount canopy or Permapost heavy-duty stake. See page 76 for details.
Material	Solid cast brass (hat and stem)
Lens	Polycarbonate frosted lens with rubber gaskets both clear and frosted provided
Socket	G4 Bi-Pin, Spring-loaded ceramic, with dual contacts and lamp clips
Adjustable Beam	Stem incorporates adjustable collar for light spread and glare control

HOW TO SPECIFY

SELECT FIXTURE HAT	SELECT STEM	ORDER ACCESSORIES
EXAMPLE: AL700	EXAMPLE: ALSTEM18	Mounting (see page 76) Risers (see page 77)

Example: ALSTEM18-LED



18" Available -BLK 24" 18-29" (Adjustable)



PL100

Elegant curved stem path fixture provides visual interest as well as the ultimate in aiming. The fixture hat can be pivoted to control light beam and reduce glare.

FINISH OPTIONS



Aged Brass
(Standard)



Premium Black
Overcoat
(Optional)

DIMENSIONS

HEIGHT	19"
WIDTH	10"
HAT HEIGHT	4.2"
HAT DIAMETER	5.2"

MOUNTING / INSTALLATION

Wire Lead Dual 16AWG wire leads (option to daisy chain), first 25', second 18".

Mounting Slotted 8.5" large ground stake (standard), Optional surface mount canopy or Permapost heavy-duty stake. See page 76 for details.

Construction

Adjustability Hat incorporates dual adjustments, brass thumb screw for vertical adjustments, brass stem nut for horizontal adjustments.

Material Solid brass (hat and stem).

Lens Frosted polycarbonate bubble lens.

Socket G4 Bi-Pin, Spring-loaded ceramic, with dual contacts.

Light Source Standard G4 LBIPIN-LED-200lm 2.5 watt 2700K factory installed. Optional no lamp.

Optional -BT Bluetooth® Controlled RGB LED Module Wattage: 2w - 6w Lumen Output: 10lm - 350lm CCT Options: 2700K, 3000K, 4000K RGB Options: Unlimited color wheel, with preset options for red, green, blue, amber and purple Dimming: Available for every color choice

HOW TO SPECIFY

FIXTURE	FINISH OPTION	CHOOSE LIGHT SOURCE	ORDER ACCESSORIES
PL100	-BLK for black overcoat (blank for aged brass finish)	-LED Add suffix for lamp (see above) -BT for Bluetooth® RGBW Module	Mounting (see page 76) Risers (see page 77)

Example: PL100-BLK-LED



Fully Adjustable Hat



MOUNTING / INSTALLATION / CONSTRUCTION

Wire Lead	25' 16AWG wire leads (option to daisy chain), first 25', second 18".
Mounting	Solid brass ground stake (standard).
Adjustability	Telescoping stem allows height adjustment between 17" and 27" for light spread control.
Material	Solid cast brass (hat and stem).
Lens	Clear, shock-resistant glass
Socket	G4 Bi-Pin, Spring-loaded ceramic, with dual contacts.
Light Source	Standard LBIPIN-LED-200lm 2.5 watt 2700K factory installed. Optional no lamp.

HOW TO SPECIFY

MODEL	ADD FOR LIGHT SOURCE
PL200 (LARGE)	-LED for LBIPIN-LED-200lm 2.5 watt 2700K lamp
PL250 (MINI)	

PL200/PL250

Featuring a fully-adjustable stem, these two fixtures allow you to control the light spread precisely from large spread to focused pools. Two different hat diameters are offered.

FINISH

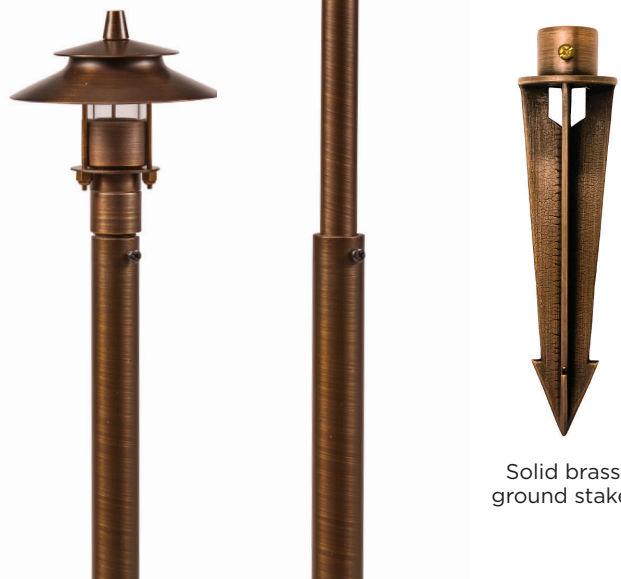


Aged Brass

DIMENSIONS

HEIGHT	17-27" ADJUSTABLE
HAT DIAMETER	7" OR 4"

Adjustable stem permits precise light and control.



Solid brass ground stake.



PL300



Designed to harmonize with minimalist landscapes or modern architecture, this fixture provides outstanding area lighting without drawing attention to itself.

FINISH OPTIONS



Aged Brass
(Standard)



Premium Black
Overcoat
(Optional)

DIMENSIONS

HEIGHT	22"
WIDTH	6"
STEM THICKNESS	1"

MOUNTING / INSTALLATION / CONSTRUCTION

Wire Lead	Dual 16AWG wire leads (option to daisy chain), first 25', second 18".
Mounting	Slotted 8.5" large ground stake (standard), Optional surface mount canopy or Permapost heavy-duty stake. See page 76 for details.
Material	Solid brass.
Lens	Frosted polycarbonate lens installed. Clear lens provided.
Lamp Socket	G4 Bi-Pin, Spring-loaded ceramic, with dual contacts.
Light Source	Standard LBIPIN-LED-200lm 2.5 watt 2700K supplied. Optional no lamp. Optional -BT Bluetooth® Controlled RGB LED Module Wattage: 2w - 6w Lumen Output: 10lm - 350lm CCT Options: 2700K, 3000K, 4000K RGB Options: Unlimited color wheel, with preset options for red, green, blue, amber and purple Dimming: Available for every color choice

HOW TO SPECIFY

FIXTURE	FINISH OPTION	CHOOSE LIGHT SOURCE	ORDER ACCESSORIES
PL300	-BLK for black overcoat (blank for aged brass finish)	-LED for LBIPIN-LED-200lm 2.5 watt 2700K lamp -BT for Bluetooth® RGBW Module	Mounting (see page 76)

Example: PL300-BLK-BT





PL600-LED

Modernist path-light with bold angular appearance for both residential and commercial appeal. Taller height provides wider spread of light and visually punctuates the path.

FINISH OPTIONS



Aged Brass
(Standard)



Premium Black
Overcoat
(Optional)

DIMENSIONS

HEIGHT	23"
WIDTH	5.5"
STEM THICKNESS	3.5"

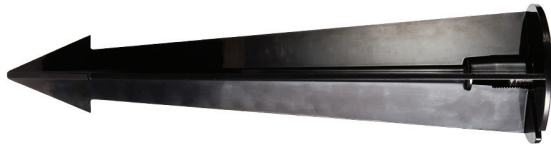
MOUNTING / INSTALLATION / CONSTRUCTION

Wire Lead	Dual 16AWG wire leads (option to daisy chain), first 25', second 18".
Mounting	Slotted 14" giant ground stake (standard), Optional surface mount canopy or Permapost heavy-duty stake. See page 76 for details.
Material	Solid brass.
Lens	Frosted polycarbonate lens installed.
Light Source	Integrated LED Module: 3 watts, 300 lumens, soft white 3000K.

HOW TO SPECIFY

MODEL	ADD FOR FINISH OPTION	ORDER ACCESSORIES
PL600-LED	-BLK for black overcoat (blank for aged brass finish)	Mounting (see page 76)

Example: PL600-LED-BLK



Giant 14" ground stake pre-installed for maximum stability.



MOUNTING / INSTALLATION

Wire Lead	25' 16AWG wire leads.
Mounting	Cast bronze 8.5" ground stake (standard).
Material	Solid sand-cast bronze hat and collar. Thick copper stem.
Lens	Frosted polycarbonate lens provided.
Lamp Socket	G4 Bi-Pin, Spring-loaded ceramic, with dual contacts.
Light Source	Standard LBIPIN-LED-200lm 2.5 watt 2700K supplied. Optional no lamp.

HOW TO SPECIFY

MODEL	CHOOSE LIGHT SOURCE
HSC-PL1	-LED for LBIPIN-LED-200lm 2.5 watt 2700K lamp (blank for no lamp)

Example: HSC-PL1-LED

HSC-PL1

For applications where a path light with a thicker, chunkier appearance is desired, this sand-cast bronze version provides all of the rugged performance of the Alliance line. The hat, collar, and stake are sand-cast bronze and the stem is thick copper.

FINISH



Sand-Cast Bronze
(Standard)

DIMENSIONS

HEIGHT	18"
HAT DIAMETER	6"



Includes sand-cast bronze stake





HSC-PL2

Path light with patterned cutouts for light bleed. For applications where a thicker, chunkier appearance is desired, this sand-cast bronze version provides all of the rugged performance of the Alliance line. The hat, collar, and stake are sand-cast bronze and the stem is thick copper.

FINISH



Sand-Cast Bronze
(Standard)

DIMENSIONS

HEIGHT	22"
HAT DIAMETER	8"

MOUNTING / INSTALLATION

Wire Lead	25' 16AWG wire leads.
Mounting	Cast bronze 8.5" ground stake (standard).
Material	Solid sand-cast bronze hat and collar. Thick copper stem.
Lens	Frosted polycarbonate lens provided.
Lamp Socket	G4 Bi-Pin, Spring-loaded ceramic, with dual contacts.
Light Source	Standard LBIPIN-LED-200lm 2.5 watt 2700K supplied. Optional no lamp.

HOW TO SPECIFY

MODEL	CHOOSE LIGHT SOURCE
HSC-PL1	-LED for LBIPIN-LED-200lm 2.5 watt 2700K lamp (blank for no lamp)

Example: HSC-PL1-LED



Includes sand-cast bronze stake



IN-GROUND

Concealed by day, dramatic,
controlled effects at night



WL300

Precisely aimable and adjustable MR16 well light for ultimate in light control. Provides the best of both worlds: flush mounting for lawn or hardscape areas and beam control.

FINISH



Aged Brass
(Standard)

DIMENSIONS

LID EXPOSED DIAMETER	6.5"
BURIED FIXTURE DEPTH	7.5"
CAN DIAMETER	5.75"

INSTALLATION

Aiming

Lamp height adjustable on a brass track (grooves to lock settings) and a swivel mount for directional aiming of beam.

Lead Wire Length

Dual 16AWG wire leads (option to daisy chain), first 25', second 18".

MATERIAL & FINISH

Housing

ABS plastic can.

Lid

Cast brass, attached with color-matched stainless steel screws.

Socket

Spring-loaded ceramic bi-pin, with dual contacts and lamp clips.

Optional Lenses

Frosted lens, hex louver available.

FACTORY-INSTALLED LAMP OPTIONS

ADD-SUFFIX	WATTAGE	BEAM ANGLE	DELIVERED LUMENS	COLOR TEMPERATURE	BASE COLOR CODE
-LED4W-NS	4	15	250	2900K	BLACK
-LED4W	4	45	250	2900K	BLACK
-LED4W-WF	4	60	250	2900K	BLACK
-LED5W-NS	5	15	310	2900K	WHITE
-LED5W	5	45	310	2900K	WHITE
-LED5W-WF	5	60	310	2900K	WHITE
-LED6W	6	45	400	2900K	BLUE

HOW TO SPECIFY

FIXTURE	CHOOSE LIGHT SOURCE
WL300	-LED Add suffix for lamp (see above) (blank for no lamp)



Adjustable and aimable lamp assembly.

IN-GROUND LIGHTS



GL100 SERIES



A complete family of in-grade lighting solutions in a design that incorporates a cast brass body and lid. Select from models for uplighting, wall-washing and ground washing in one fixture series. Small exposed diameter hides easily. Ground washing models are a good alternative to path lights in areas where an exposed fixture is objectionable.

FINISH OPTIONS



Aged Brass
(Standard)



Premium Black
Overcoat
(Optional)



GL100

Shrouded open convex lens, for wall washing, directional uplighting.



GL170

Ground wash, opposing sides.



GL150

Clear convex lens, for uplighting.



GL180

Ground wash, 180 pattern, often for pavement lighting.



GL160

Grate-protected convex lens, for uplighting.



GL190

Ground wash, 360 pattern.

SPECIFICATIONS

Lead Wire	Dual 16AWG wire leads (option to daisy chain), first 25', second 18".
Housing	Cast brass.
Lid	Cast brass, attached with 4 color matched stainless steel screws
Socket	Spring-loaded ceramic bi-pin, with dual contacts and lamp clips

FACTORY-INSTALLED LAMP OPTIONS

ADD-SUFFIX	WATTAGE	BEAM ANGLE	DELIVERED LUMENS	COLOR TEMPERATURE	BASE COLOR CODE
-LED4W-NS	4	15	250	2900K	BLACK
-LED4W	4	45	250	2900K	BLACK
-LED4W-WF	4	60	250	2900K	BLACK
-LED5W-NS	5	15	310	2900K	WHITE
-LED5W	5	45	310	2900K	WHITE
-LED5W-WF	5	60	310	2900K	WHITE
-LED6W	6	45	400	2900K	BLUE

Also available without lamp for field installation

FACTORY-INSTALLED RGB LED BLUETOOTH® MODULE

Wattage: 2w - 4w, **Lumen Output:** 10lm - 430lm **Beam Spread:** 40° CCT
Options: 2700K, 3000K, 4000K **RGB Options:** Unlimited Color Wheel Options with quick preset options for Red, Green, Blue, Amber and Purple
Dimming: Option available for every color choice.

HOW TO SPECIFY

SELECT LID STYLE	CHOOSE LIGHT SOURCE
Example: GL160	-LED Add suffix for lamp (see above) -BT for factory installed Bluetooth® RGB module (blank for no lamp)

DIMENSIONS

Lid diameter (all models)	3.5"
Buried fixture depth (all models)	3.5"
Lid Thickness / Height	GL100: 1.5" GL150: 0.5" GL160: 0.5" GL170: 0.5" GL180: 0.5" GL190: 0.5"



IN-GROUND LIGHTS



GL300 SERIES



A complete family of in-grade lighting solutions for a variety of lighting applications. Combines a rugged brass lid with a non-corrosive polymer housing for long life.

FINISH OPTIONS



Aged Brass
(Standard)



Premium Black
Overcoat
(Optional)



GL300

Clear convex lens, for uplighting.



GL310

Domed half lid, for wall washing or directional lighting.



GL350

Shrouded open convex lens, for wall washing, directional uplighting.



GL360

Grate-protected convex lens, for uplighting.



GL370

Ground wash, opposing sides.



GL380

Ground wash, 180 pattern, often for pavement lighting.



GL390

Ground wash, 360 pattern.



SPECIFICATIONS

Lead Wire Length	60" 16AWG wire lead.
Housing	Non-corrosive polymer.
Lid	Cast brass, attached with 5 color-matched stainless steel screws
Socket	Spring-loaded ceramic bi-pin MR16, with dual contacts and lamp clips

FACTORY-INSTALLED LAMP OPTIONS

ADD-SUFFIX	WATTAGE	BEAM ANGLE	DELIVERED LUMENS	COLOR TEMPERATURE	BASE COLOR CODE
-LED4W-NS	4	15	250	2900K	BLACK
-LED4W	4	45	250	2900K	BLACK
-LED4W-WF	4	60	250	2900K	BLACK
-LED5W-NS	5	15	310	2900K	WHITE
-LED5W	5	45	310	2900K	WHITE
-LED5W-WF	5	60	310	2900K	WHITE
-LED6W	6	45	400	2900K	BLUE

Also available without lamp for field installation

FACTORY-INSTALLED RGB LED BLUETOOTH® MODULE

Wattage: 2w - 6w, **Lumen Output:** 15lm - 450lm **Beam Spread:** 40° **CCT Options:** 2700K, 3000K, 4000K **RGB Options:** Unlimited Color Wheel Options with quick preset options for Red, Green, Blue, Amber and Purple
Dimming: Available for every color choice.

HOW TO SPECIFY

SELECT LID STYLE	CHOOSE LIGHT SOURCE
Example: GL360	<p>-LED Add suffix for lamp (see above)</p> <p>-BT for factory installed Bluetooth® RGB module</p> <p>(blank for no lamp)</p>

DIMENSIONS

Exposed diameter (all models)	4.87"
Buried fixture depth (all models)	4.75"
Lid Thickness / Height	GL300: 0.5" GL310: 2" GL350: 1.75" GL360: 1" GL370: 1" GL380: 1" GL390: 1"





CGWL01

Heavy duty brass grated lid, convex tempered glass lens, PAR36 lamp. Available in aged brass or black finish.



WL100

Black ABS grated lid, PAR36 lamp.



CGWL02

Cast brass lid with open glass lens, PAR36 lamp. Available in aged brass or black finish.



WL200

Cast brass lid with open glass lens, PAR 36 lamp.





WL400-BT WL495-LED

HIGH LUMEN OUTPUT



Cast brass lid with open glass lens. Includes integrated Bluetooth® RGB LED module standard (WL400-BT) or integrated high lumen LED module (WL495-LED).



FINISH



Aged Brass
(Standard)



Premium Black
Overcoat
(Optional)

SPECIFICATIONS (ALL MODELS PAGES 32-33)

Lead Wire Length	Dual 16AWG wire leads (option to daisy chain), first 25', second 18".
Housing	ABS plastic can, stainless steel lamp retainer ring.
Socket	Spade connectors for LPAR36 lamp (not applicable to WL400-BT and WL495-LED).
Accessories	Hex louver.

MODEL WL400-BT FACTORY-INSTALLED RGB LED BLUETOOTH® MODULE

Wattage: 2w - 6w, **Lumen Output:** 10lm - 900lm **Beam Spread:** 40°
CCT Options: 2700K, 3000K, 4000K **RGB Options:** unlimited color wheel, quick preset options for red, green, blue, amber and purple
Dimming: option available for every color choice.

MODEL WL495-LED INTEGRATED LED

Integrated LED: 11 watts, 1200 lumens, 40 degree flood, 3000K.

LIGHT SOURCE OPTIONS FOR CGWL01, CGWL02, WL100, WL200

Choose factory-installed PAR-36 lamp below. Also available without lamp.

ADD-SUFFIX	WATTAGE	BEAM ANGLE	DELIVERED LUMENS	COLOR TEMPERATURE	COLOR CODE
-LED4W-F	4	20	250	2800K	GRAY
-LED4W	4	40	250	2800K	GRAY
-LED8W-F	8	20	300	2800K	BLACK
-LED8W	8	40	300	2800K	BLACK
-LED10W-F	10	30	400	2800K	BLUE
-LED10W	10	45	400	2800K	BLUE

DIMENSIONS

Lid diameter (all models)	6"
Buried fixture height (all models)	8.75"
Can diameter	5.5"

HOW TO SPECIFY

MODEL	CHOOSE LIGHT SOURCE	ADD FOR FINISH OPTION
CGWL01 CGWL02	-LED Add suffix for lamp (see above)	-BLK for black overcoat (blank for aged brass finish)
WL100 WL200	-LED Add suffix for lamp (see above)	
WL495 WL400	-LED Integrated LED module -BT Bluetooth® RGBW module	-BLK for black overcoat (blank for aged brass finish)

Example: CGWL02-LED-BLK



HARDSCAPE

Bringing Light to Outdoor Lifestyles



SL100

Versatile surface-mounted fixture commonly used on fence posts, steps and walls to provide low-level illumination for safe passage. 3.4" diameter fits a traditional 4" wood post. 1.75" depth.

FINISH OPTIONS



Aged Brass
(Standard)



Premium Black
Overcoat
(Optional)



SL150

Bell-shaped fixture has a decorative daytime appearance, providing versatility for mid-wall and low-level installations. 3.9" width and 2" depth provides wider spread of light than SL100.

SPECIFICATIONS

Wire Lead

25' 16AWG brown wire lead.

Mounting

Concealed mounting base plate and fasteners with adjustable mounting guides. SL100 fixture face attaches to mounting base with inconspicuous allen hex screws. Mounting template provided to guide in mounting and concealing wiring. Splices are made remotely from fixture, not in base plate.

Material

Brass.

Lens

SL100 has frosted lens.

Socket

G4 Bi-Pin, Spring-loaded ceramic, with dual contacts.

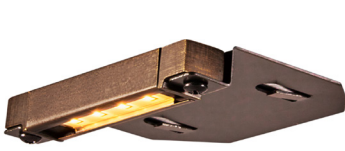
Light Source

Standard LBIPIN-LED-200lm 2.5 watt 2700K factory installed. Optional no lamp.

HOW TO SPECIFY

MODEL	ADD FOR FINISH OPTION	CHOOSE LIGHT SOURCE
SL100 SL150	-BLK for black overcoat (blank for aged brass finish)	-LED for LBIPIN-LED-200lm 2.5 watt 2700K lamp (blank for no lamp)

Example: SL100-BLK-LED



SL65-LED

This 4" wide ledge fixture is ideal for tight areas and columns.

2W integrated LED (4 chips) 110lm
 Bracket Depth: 3.5"
 Housing Height: 0.5 in.
 Housing Depth: 0.35 in.



SL75-LED

Popular 7" wide fixture for all applications.

3W integrated LED (8 chips) 300lm
 Bracket Depth: 3.5"
 Housing Height: 0.5 in.
 Housing Depth: 0.35 in.



SL85-LED

Extended 12" wide ledge fixture for taller walls and wider spread.

4W integrated LED (12 chips) 380lm
 Bracket Depth: 3.5"
 Housing Height: 0.5 in.
 Housing Depth: 0.35 in.



SPECIAL FEATURES



Optional glare shield included.



Optional frosted lens included.

FINISH OPTIONS



Aged Brass
(Standard)



Premium Black
Overcoat
(Optional)

COMMON FEATURES AND SPECIFICATIONS

Common applications Retaining walls, perimeter walls (use mounting plate); can also surface mount to railings, decks.

Lead wire 10' 16AWG brown wire lead

Material Fixture housing cast brass. Removable mounting plate stainless steel. Includes optional cast brass glare shield. Optional polycarbonate frosted lens.

HOW TO SPECIFY

CHOOSE MODEL	CHOOSE LIGHT SOURCE	FINISH OPTION
SL65 SL75 SL85	-LED Integrated LED module	-BLK for black overcoat (blank for aged brass finish)

Example: SL85-LED-BLK



SL60-BT



Surface mounted next-generation ledge light fixtures with on-board integrated RGB LED Bluetooth® module.

Width: 5"
Housing Height: 0.75 in.
Housing Depth: 1.25 in.



SL70



Bracket-mounted next-generation ledge light fixtures with optional on-board integrated RGB LED Bluetooth® module.

Width: 5"
Bracket Depth: 3.5"
Housing Height: 0.75 in.
Housing Depth: 1.25 in.

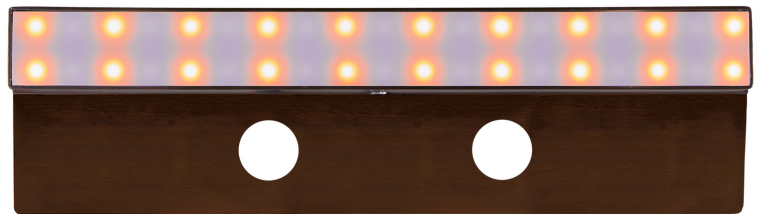
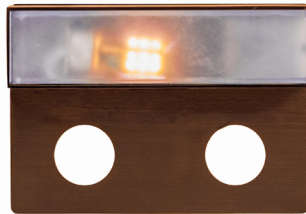


SL80-BT



Large surface mounted next-generation ledge light fixtures with an integrated RGB LED Bluetooth® module.

Width: 12"
Bracket Depth: 3.5"
Housing Height: 0.75 in.
Housing Depth: 1.25 in.



COMMON FEATURES AND SPECIFICATIONS

Lead Wire	25' 16AWG brown wire lead.
Mounting	SL70 & SL80-bt has an integrated mounting plate for easy attachment in masonry walls or under cap stones. SL60-bt is designed for surface mounting to rails, decks, etc.
Material	Brass body. Brass flange (SL70 & SL80-bt).
Lens	Frosted polycarbonate lens.
Light Source	(SL70 only) Standard LBIPIN-LED-200lm 2.5 watt 2700K included. Optional no lamp.

BT LIGHT SOURCE SPECIFICATIONS

Factory-installed RGB Bluetooth® module, 1-3 watts, 15-200.
CCT Options: 2700K, 3000K, 4000K
RGB Options: Unlimited color wheel options with quick preset options for Red, Green, Blue, Amber and Purple.
Dimming: Option available for every color choice.

FINISH OPTIONS



Aged Brass (Standard)



Premium Black Overcoat (Optional)

HOW TO SPECIFY

CHOOSE MODEL	CHOOSE LIGHT SOURCE	FINISH OPTION
SL60 for surface mounting SL80 for masonry mounting with flange	-BT for Bluetooth® RGB LED Module	Add -BLK for black overcoat
SL70 for masonry mounting with flange	-LED for LBIPIN-LED-200lm 2.5 watt 2700K lamp (not available for SL60, SL80 models) -BT for Bluetooth® RGB LED Module (blank for no lamp)	

Example: SL70-LED-BLK

SL25-LED



6" width x 2.88" tall, louvered face. Convenient surface-mounted (backless), does not have/require a junction box. 7W integrated LED standard.

SL35-LED



9.5" width x 2.88" tall, louvered face. Convenient surface-mounted (backless), does not have/require a junction box. 13W integrated LED standard.

SL26-LED



6" width x 2.88" tall, frosted open lens face. Convenient surface-mounted (backless), does not have/require a junction box. 7W integrated LED standard.

SL36-LED



9.5" width x 2.88" tall, frosted open lens face. Convenient surface-mounted (backless), does not have/require a junction box. 13W integrated LED standard.

FINISH OPTIONS



Aged Brass (Standard)



Premium Black Overcoat (Optional)

SPECIFICATIONS

Lead Wire

25' 16AWG brown wire lead.

Material

Brass construction. Polycarbonate lens (models SL26 and SL36).

Light Source

Standard integrated LED. Models SL25 and SL26 7W 570lm 2700K, Models SL35 and SL36 13W 1000lm 2700K. *Note that heavy shielding of louvered cover reduces lumen output significantly, consult factory for photometrics if needed.*

For model SL25, SL35 optional factory-installed RGB Bluetooth® module CCT Options: 2700K, 3000K, 4000K RGB Options: Unlimited Color Wheel Options with quick preset options for Red, Green, Blue, Amber and Purple Dimming: Option available for every color choice. For 6" width models: 1-4 watts, 15-200 lumens. For 9.5" width models: 2-5 watts, 15-300 lumens

FAST, CONVENIENT INSTALLATION

Thin style fixture allows surface mounting to any surface. No junction box needed or provided. Wood screw anchors provided. Choose other anchors to affix to masonry if desired.

HOW TO SPECIFY

CHOOSE MODEL	CHOOSE LIGHT SOURCE	FINISH OPTIONS
SL25 6" width, louvered face	-LED Integrated LED module	-BLK for black overcoat (blank for aged brass finish)
SL35 9.5" width, louvered face	-BT for RGB Bluetooth® module	
SL26 6" width, open frosted lens face	-LED Integrated LED module	
SL36 9.5" width, open frosted lens face		



SL200

6" width standard step light with junction box and single lamp. 2.88" height

FINISH



Aged Brass
(Standard)

SPECIFICATIONS

Lead Wire

Installation

Material

Socket

Light Source

SL300

9.5" width standard step light with junction box and dual lamp. 2.88" height

25' 16AWG brown wire lead.

Includes metal junction box with knockouts for wiring that can be integrated into wall during construction.

Brass face plate.

G4 Bi-Pin, spring-loaded, ceramic, with dual contacts.

Standard LBIPIN-LED-200lm 2.5 watt 2700K included (one lamp in SL200, two lamps in SL300). Optional no lamp(s).

HOW TO SPECIFY

CHOOSE MODEL	CHOOSE LIGHT SOURCE
SL200 6" width SL300 9.5" width	-LED for LBIPIN-LED-200lm 2.5 watt 2700K lamp(s) (blank for no lamp)



POST50

Craftsman / prairie-style post or column fixture with handsome daytime appearance and guiding night-time glow. 3.5" square footprint, 7" overall height and 5.25 hat width.

FINISH



Aged Brass
(Standard)

SPECIFICATIONS

Wire Lead
Mounting

Material

Lens

Socket

Light Source

POST100



Larger format craftsman post fixture with 7.75" square footprint and 12" overall height. Hat width is 11". Impressive appearance perfect for stone or masonry columns.

25' 16AWG brown wire lead.

Concealed mounting base plate. Fixture face attaches to mounting base with color-matched phillips screws. Splices are made remotely from fixture, not in base plate.

Brass fixture (hat, body, base).

Opaque polycarbonate lenses.

POST50: G4 Bi-Pin, ceramic, spring-loaded dual contacts

POST100: MR16 bi-pin, ceramic, spring loaded dual contacts

POST50: Standard LBIPIN-LED-200lm 2.5 watt 2700K provided. Optional no lamp.

POST100 LAMP OPTIONS

ADD-SUFFIX	WATTAGE	BEAM ANGLE	DELIVERED LUMENS	COLOR TEMPERATURE	BASE COLOR CODE
-LED4W	4	45	250	2900K	BLACK
-LED5W	5	45	310	2900K	WHITE
-LED6W	6	45	400	2900K	BLUE

HOW TO SPECIFY

MODEL	ADD FOR LIGHT SOURCE
POST50	-LED for LBIPIN-LED-350lm 3.5 watt 2700K lamp (blank for no lamp)
POST100	-LED Add suffix for lamp (see above) (blank for no lamp)

Example: POST100-LED



TAPE-LED



Continuous strip of LED emitters available in 5', 15' or 30' lengths that can be trimmed (Scrap tape cannot be re-used). Can be affixed directly to surfaces. Includes an integrated frosted diffusing lens. Typically installed facing down on railings, step risers, toe-kicks, under cabinets, etc.

DIMENSIONS

TAPE WIDTH	0.5"
TAPE HEIGHT	0.5"

SPECIFICATIONS

Wire Lead	10' brown 16AWG wire attached to the end of the rolled light strip.
Mounting	Directly to surface, trim to length needed.
Light Source	120° degrees flood, soft white 2900K. CRI Ra>80. Rated hours 30,000. See <i>How to Specify</i> for watts and lumens.

FACTORY-INSTALLED RGB LED BLUETOOTH® MODULE

Wattage Per Foot: 2.6W, **Lumens Per Foot:** 10-150lm, **Beam Spread:** 120°
CCT Options: 2700K, 3000K, 4000K **RGB Options:** unlimited color wheel, quick preset options for red, green, blue, amber and purple
Dimming: option available for every color choice.

HOW TO SPECIFY

MODEL	ADD FOR LIGHT SOURCE	ADD FOR TAPE LENGTH
TAPE	-LED for standard 2900K soft white LED	-5FT 5' length, 9W, 750lm -15FT 15' length, 23W, 1500lm -30FT 30' length, 46W, 2900lm
	-BT for RGBW Bluetooth® module (not available in 30' length)	-5FT 5' length, 13W, 750lm -15FT 15' length, 40W, 1500lm

Example: TAPE-LED-30FT





WS100/WS200

Two different size options in an unobtrusive up-down wall sconce. Light source is covered by the fixture for maximum glare control and grazes the wall from above and below. Two lamps per fixture. Install at eye-level.

WS100: 6" height x 3" width x 2" depth.

WS200: 9" height x 6" width x 3.5" depth.

FINISH



Aged Brass
(Standard)

SPECIFICATIONS

Wire Lead

25' 16AWG brown wire lead.

Mounting

Concealed mounting base plate. Fixture face attaches to mounting base with Phillips screws. Splices are made remotely from fixture, not in base plate.

Material

Brass.

Lens

Frosted top lens.

Socket

G4 Bi-Pin, Spring-loaded ceramic, with dual contacts.

Light Source

Two standard LBIPIN-LED-200lm 2.5 watt 2700K provided. Optional no lamp.

HOW TO SPECIFY

MODEL	CHOOSE LIGHT SOURCE
WS100 (small) WS200 (large)	-LED for LBIPIN-LED-200lm 2.5 watt 2700K lamp (blank for no lamp)

Example: WS200-LED





WS350-BT



Classic cylindrical up/down fixture with dual Bluetooth® controlled RGB light sources for creative wall lighting options.

FINISH OPTIONS



Aged Brass
(Standard)



Premium Black
Overcoat
(Optional)



White Premium
Overcoat
(Optional)

DIMENSIONS

HEIGHT	8"
WIDTH	2.5"
DEPTH	4.5"

MOUNTING / INSTALLATION

Wire Lead	25' wire lead, 16AWG, brown color.
Mounting	Stainless steel concealed mounting plate. Fixture attaches to mounting plate with color-matched phillips screws.

MATERIAL

Housing	Solid cast brass.
Lens	Clear shock-resistant glass lens.

FACTORY-INSTALLED RGB LED BLUETOOTH® MODULES (2)

Wattage:	2w - 4w, per module
Lumen Output:	10lm - 430lm per module
Beam Spread:	25°
CCT Options:	2700K, 3000K, 4000K
RGB Options:	unlimited color wheel, quick preset options for red, green, blue, amber and purple
Dimming:	option available for every color choice.

HOW TO SPECIFY

FIXTURE	LIGHT SOURCE	FINISH OPTIONS
WS350	-BT integrated RGB Bluetooth® module	-BLK for Black Overcoat -WHT for White Overcoat (blank for aged brass finish)

Example: WS350-BT-WHT



WS350-BT fixtures are often used in swimming pool screened enclosures. They are easily added to vertical supports. Color-coordinated black and white overcoat options are available.



WALL WASH

Define boundaries, accent architecture,
create dramatic shadows



FL50



Compact wall wash fixture that provides broad beam of light at low intensity to avoid reflected hot spots. Ideal for wall washing, signage and more.

FINISH



Aged Brass
(Standard)



Premium Black
Overcoat
(Optional)

DIMENSIONS

HEIGHT	2"
WIDTH	4"
DEPTH	2.25"

MOUNTING / INSTALLATION

Lead Wire Length Dual 16AWG wire leads (option to daisy chain), first 25', second 18".

Mounting Slotted 8" ground stake (standard), Optional surface mount canopy or Permapost heavy-duty stake. Optional fixed or adjustable brass risers. See page 76 for details.

MATERIAL & FINISH

Material Solid cast brass body and faceplate. Rubber faceplate gasket. Solid cast brass knuckle with knob for angle adjustment.

Lens Faceplate with clear lens factory-installed. Optional frosted faceplate (pictured) available at no additional cost (model FL50-FFP).

Socket G4 Bi-Pin, spring-loaded, ceramic, with dual contacts.

Light Source Standard LBIPIN-LED-200lm 2.5 watt 2700K factory installed. Optional no lamp.

Optional -BT Bluetooth® Controlled RGB LED Module

Wattage: 2w - 6w

Lumen Output: 10lm - 350lm

CCT Options: 2700K, 3000K, 4000K

RGB Options: Unlimited color wheel, with preset options for red, green, blue, amber and purple

Dimming: Available for every color choice.

HOW TO SPECIFY

FIXTURE	FINISH OPTION	CHOOSE LIGHT SOURCE	ORDER ACCESSORIES
FL50	-BLK for black overcoat (blank for aged brass finish)	-LED Add suffix for lamp (see above) -BT for Bluetooth® RGB LED Module (blank for no lamp)	Mounting (see page 76) Risers (see page 77) Frosted face plate (-FFP)

Example: FL50-BLK-BT





FL100

Mid-size wall flood and wall-washing fixture for floodlighting architecture, boundary walls or signage.

FINISH



Aged Brass
(Standard)

DIMENSIONS

HEIGHT	5"
WIDTH	3.75"
BASE HEIGHT	2.25"

MOUNTING / INSTALLATION

Lead Wire Length Dual 16AWG wire leads (option to daisy chain), first 25', second 18".

Mounting Slotted 8" ground stake (standard), Optional surface mount canopy or Permapost heavy-duty stake. Optional fixed or adjustable brass risers. See page 76 for details.

MATERIAL & FINISH

Material Solid cast brass body and faceplate. Rubber faceplate gasket. Solid cast brass knuckle with knob for angle adjustment.

Lens Faceplate with clear lens factory-installed. Optional frosted faceplate sold separately for field installation (model FFP100)

Socket G4 Bi-Pin, Spring-loaded, ceramic, with dual contacts.

Light Source Standard LBIPIN-LED-200lm 2.5 watt 2700K factory installed. Optional no lamp.

HOW TO SPECIFY

CHOOSE MODEL	LIGHT SOURCE	ORDER ACCESSORIES
FL100	-LED for LBIPIN-LED-200lm 2.5 watt 2700K lamp (blank for no lamp)	Mounting (see page 76) Risers (see page 77)

Example: SL85-LED-BLK





FL200



Versatile, wide format wall washer and floodlight with numerous options for lamps, mounting options and optional color-tunable, dimmable Bluetooth® LED module.

FINISH OPTIONS



Aged Brass
(Standard)



Premium Black
Overcoat
(Optional)

DIMENSIONS

HEIGHT	4.25"
DEPTH	6"
WIDTH	5.25"

MOUNTING / INSTALLATION

Lead Wire Length Dual 16AWG wire leads (option to daisy chain), first 25', second 18".

Mounting Slotted 8.5" large ground stake (standard), Options: canopy surface mount, gutter mount, Permapost heavy-duty stake, fixed solid brass risers, adjustable brass riser. See page 76 for details.

MATERIAL

Housing Solid cast brass.

Knuckle Solid cast brass, knob for angle adjustment.

Socket Spring-loaded ceramic bi-pin MR16, with dual contacts and lamp clips.

Faceplate Solid cast brass, with rubber seal, with clear tempered, shock-resistant glass lens.

Optional Lenses Frosted lens provided in box.

LIGHT SOURCE OPTIONS

Choose factory-installed MR16 lamp below, or factory-installed Bluetooth® module. Also available without lamp.

FACTORY-INSTALLED LAMP OPTIONS

ADD-SUFFIX	WATTAGE	BEAM ANGLE	DELIVERED LUMENS	COLOR TEMPERATURE	BASE COLOR CODE
-LED4W	4	45	250	2900K	BLACK
-LED4W-WF	4	60	250	2900K	BLACK
-LED5W	5	45	310	2900K	WHITE
-LED5W-WF	5	60	310	2900K	WHITE
-LED6W	6	45	400	2900K	BLUE

FACTORY-INSTALLED RGB LED BLUETOOTH® MODULE

Wattage: 4w - 11w, **Lumen Output:** 10lm - 900lm **Beam Spread:** 40°
CCT Options: 2700K, 3000K, 4000K **RGB Options:** unlimited color wheel, quick preset options for red, green, blue, amber and purple
Dimming: option available for every color choice.

HOW TO SPECIFY

FIXTURE	FINISH OPTION	CHOOSE LIGHT SOURCE	ORDER ACCESSORIES
FL200	-BLK for black overcoat (blank for aged brass finish)	-LED Add suffix for lamp (see above) -BT for Bluetooth® RGB LED Module (blank for no lamp)	Mounting (see page 76) Risers (see page 77)

Example: FL50-BLK-BT



DOWN LIGHTS

Accent specific features or emulate the
silvery glow of moonlight



DL50

Easy to conceal downlight with precise aiming can be hidden under eaves, in trees or other overhead locations.

FINISH



Aged Brass
(Standard)

DIMENSIONS

HEIGHT	5.75"
BASE HEIGHT	2.75"
WIDTH	1.75"
BASE WIDTH	1.75"

MOUNTING / INSTALLATION

Wire Lead 25' wire lead, 16AWG, brown color..

Mounting Round canopy mounting base with three color-matched screws.

MATERIAL & FINISH

Housing Solid cast brass.

Knuckle Solid cast brass, knob for angle adjustment.

Socket Spring-loaded ceramic bi-pin MR-11, with dual contacts and lamp clips.

Shroud & Lens Solid cast brass, with o-ring seal.

LIGHT SOURCE OPTIONS

Choose factory-installed MR-11 LED lamp below. Also available without lamp.

FACTORY-INSTALLED LAMP OPTION

ADD-SUFFIX	WATTAGE	BEAM ANGLE	DELIVERED LUMENS	COLOR TEMPERATURE
-LED	4	45	175	2900K

HOW TO SPECIFY

FIXTURE	CHOOSE LIGHT SOURCE	ORDER ACCESSORIES
DL50	-LED Add suffix for lamp (see above) (blank for no lamp)	Lenses (see page 81)

Example: DL50-LED



DOWN LIGHTS



DL100

Mid-sized downlight available with a wide-range of LED lamps. Tree mounting bracket standard.

FINISH



Aged Brass
(Standard)

DIMENSIONS

HEIGHT	6.5"
BASE HEIGHT	3"
WIDTH	2.5"
BASE WIDTH	4.5"

MOUNTING / INSTALLATION

Wire Lead

25' wire lead, 16AWG, brown color.

Mounting

Brass tree-mounting bracket and brass nut. Supplied with stainless steel color-matched screws with adjustable stand-offs to accommodate tree growth. Fixture can also be attached to our round surface mount canopy (see pg 76) if desired.

MATERIAL

Housing

Solid cast brass.

Knuckle

Solid cast brass, knob for angle adjustment.

Socket

Spring-loaded ceramic bi-pin MR16, with dual contacts and lamp clips.

Shroud & Lens

Solid cast brass, with dual o-ring seal, with convex tempered, shock-resistant glass lens.

Optional Lenses

Frosted lens, hex louver.

LIGHT SOURCE OPTIONS

Choose factory-installed MR16 lamp below. Also available without lamp.

FACTORY-INSTALLED LAMP OPTIONS

ADD-SUFFIX	WATTAGE	BEAM ANGLE	DELIVERED LUMENS	COLOR TEMPERATURE	BASE COLOR CODE
-LED4W-NS	4	15	250	2900K	BLACK
-LED4W	4	45	250	2900K	BLACK
-LED4W-WF	4	60	250	2900K	BLACK
-LED5W-NS	5	15	310	2900K	WHITE
-LED5W	5	45	310	2900K	WHITE
-LED5W-WF	5	60	310	2900K	WHITE
-LED6W	6	45	400	2900K	BLUE

HOW TO SPECIFY

CHOOSE MODEL	LIGHT SOURCE	ORDER ACCESSORIES
DL100	-LED Add suffix for lamp (see above) (blank for no lamp)	Mounting (see page 76) Lenses (see page 81)

Example: DL100-LED



DL200



Our most versatile and popular downlight, with numerous options for lamps and optional color-tunable, dimmable Bluetooth® LED module. This fixture's long adjustable shroud aids in aiming and glare control.

FINISH



Aged Brass (Standard)



Premium Black Overcoat (Optional)

DIMENSIONS

HEIGHT	8"
BASE HEIGHT	3"
WIDTH	2.5"
BASE WIDTH	4.5"

FACTORY-INSTALLED RGB LED BLUETOOTH® MODULE

Wattage: 2w - 4w, **Lumen Output:** 10lm - 430lm **Beam Spread:** 40°
CCT Options: 2700K, 3000K, 4000K
RGB Options: unlimited color wheel, quick preset options for red, green, blue, amber and purple
Dimming: option available for every color choice.

MOUNTING / INSTALLATION

Wire Lead 25' wire lead, 16AWG, brown color.
Mounting Brass tree-mounting bracket and brass nut. Supplied with stainless steel screws with adjustable stand-offs to accommodate tree growth. Fixture can also be attached to our round surface mount canopy (see pg 76) if desired.

MATERIAL

Housing Solid cast brass.
Knuckle Solid cast brass, knob for angle adjustment.
Socket Spring-loaded ceramic bi-pin MR16, with dual contacts and lamp clips.
Shroud & Lens Solid cast brass, with dual o-ring seal, with convex tempered, shock-resistant glass lens.
Optional Lenses Frosted lens, hex louver.

LIGHT SOURCE OPTIONS

Choose factory-installed MR16 lamp below, or factory-installed Bluetooth® module. Also available without lamp.

FACTORY-INSTALLED LAMP OPTIONS

ADD-SUFFIX	WATTAGE	BEAM ANGLE	DELIVERED LUMENS	COLOR TEMPERATURE	BASE COLOR CODE
-LED4W-NS	4	15	250	2900K	BLACK
-LED4W	4	45	250	2900K	BLACK
-LED4W-WF	4	60	250	2900K	BLACK
-LED5W-NS	5	15	310	2900K	WHITE
-LED5W	5	45	310	2900K	WHITE
-LED5W-WF	5	60	310	2900K	WHITE
-LED6W	6	45	400	2900K	BLUE

HOW TO SPECIFY

FIXTURE	FINISH OPTION	CHOOSE LIGHT SOURCE	ORDER ACCESSORIES
DL200	-BLK for black overcoat (blank for aged brass finish)	-LED Add suffix for lamp (see above) -BT for Bluetooth® RGB LED Module (blank for no lamp)	Mounting (see page 76) Lenses (see page 81)

Example: DL200-BLK-BT

DOWN LIGHTS



HL100



An all-purpose hanging downlight with adjustable extendable shroud. Supplied with 18" mounting chain.

FINISH



Aged Brass
(Standard)

DIMENSIONS

CHAIN LENGTH	18"
LENGTH	6"
WIDTH	2.25"
BASE WIDTH	4.5"

MOUNTING / INSTALLATION

Lead Wire 25' wire lead, 16AWG, brown.
Mounting 18" hanging chain supplied. Loop on top of fixture can also be attached with nursery tape, guy wire, etc.

MATERIAL

Housing Solid cast brass.
Socket Spring-loaded ceramic bi-pin MR16, with dual contacts and lamp clips.
Shroud Solid cast brass adjustable and extendable.

LIGHT SOURCE OPTIONS

Choose factory-installed MR16 lamp below, or factory-installed Bluetooth® module. Also available without lamp.

FACTORY-INSTALLED LAMP OPTIONS

ADD-SUFFIX	WATTAGE	BEAM ANGLE	DELIVERED LUMENS	COLOR TEMPERATURE	BASE COLOR CODE
-LED4W-NS	4	15	250	2900K	BLACK
-LED4W	4	45	250	2900K	BLACK
-LED4W-WF	4	60	250	2900K	BLACK
-LED5W-NS	5	15	310	2900K	WHITE
-LED5W	5	45	310	2900K	WHITE
-LED5W-WF	5	60	310	2900K	WHITE
-LED6W	6	45	400	2900K	BLUE

FACTORY-INSTALLED RGB LED BLUETOOTH® MODULE

Wattage: 2w - 6w, **Lumen Output:** 10lm - 350lm **Beam Spread:** 40°
CCT Options: 2700K, 3000K, 4000K **RGB Options:** unlimited color wheel, quick preset options for red, green, blue, amber and purple
Dimming: option available for every color choice.

HOW TO SPECIFY

MODEL	CHOOSE LIGHT SOURCE
HL100	-LED for LBIPIN-LED-200lm 2.5 watt 2700K lamp -BT for Bluetooth® RGB LED Module (blank for no lamp)

Example: HL100-BT



HL200



Perforated hanging lamp provides eye-catching effects without glare. Appears to twinkle in the breeze. Available with standard lamps or optional color-tunable, dimmable Bluetooth® LED module.

FINISH



Aged Brass
(Standard)

DIMENSIONS

CHAIN LENGTH	18"
LENGTH	7.25"
WIDTH	2.5"

MOUNTING / INSTALLATION

Wire Lead	25' wire lead, 16AWG, brown.
Mounting	18" hanging chain supplied. Loop on top of fixture can also be attached with nursery tape, guy wire, etc.

MATERIAL

Housing	Solid cast brass.
Socket	Spring-loaded ceramic G4 Bi-Pin, with dual contacts and lamp clips.
Shroud	Solid cast brass, with star-lighting perforations.

LIGHT SOURCE OPTIONS

Standard LBIPIN-LED-200lm 2.5 watt 2700K factory installed or factory-installed Bluetooth® module. Also available without lamp.

FACTORY-INSTALLED RGB LED BLUETOOTH® MODULE

Wattage: 4w - 8w, **Lumen Output:** 10lm - 350lm **Beam Spread:** 40°
CCT Options: 2700K, 3000K, 4000K **RGB Options:** unlimited color wheel, quick preset options for red, green, blue, amber and purple
Dimming: option available for every color choice.

HOW TO SPECIFY

FIXTURE	CHOOSE LIGHT SOURCE
HL200	-LED for LBIPIN-LED-200lm 2.5 watt 2700K lamp -BT for Bluetooth® RGB LED Module (blank for no lamp)

Example: HL200-BT



SPECIALTY

Professionals use these appealing solutions
for unusual lighting opportunities



TIKI ALSTEM60

Festive area light hat that incorporates a citronella/kerosene tiki torch at the top. Paired with the ALSTEM60, it transforms into a powerful spread area or downward light, illuminating the ground for safe passage and enhancing outdoor living spaces with a tropical ambiance.

FINISH



Aged Brass
(Standard)

DIMENSIONS

RECOMMENDED STEM HEIGHT	60"
TOP HEIGHT	11"
TOP WIDTH	8"

MOUNTING / INSTALLATION

Wire Lead ALSTEM60, dual 16AWG wire leads (option to daisy chain), first 25', second 18".

Mounting Hat and stem sold separately. Recommended for use with ALSTEM60 60" brass stem with Permapost stake included. See page 76 for details.

CONSTRUCTION

Material Brass body, metal wick snuffer/protector, metal chain. Braided wick.

Lamp Socket ALSTEM60, G4 bi-pin, spring-loaded ceramic, with dual contacts.

Light Source Standard LBIPIN-LED-200lm 2.5 watt 2700K supplied. Optional no lamp.

HOW TO SPECIFY

CHOOSE HAT	ADD FOR LIGHT SOURCE	CHOOSE STEM
TIKI	-LED for LBIPIN-LED-200lm 2.5 watt 2700K lamp	ALSTEM60 60" stem recommended, includes Permapost stake





ML15-LED

A compact integrated LED fixture that allows light to be added to unusual and creative places. Illuminate stone lanterns, rock niches, or under steps. Install in planters and pots to back-light topiary or decorative plants. Not to be submerged in water. Includes removable glare shield and 6" stainless steel stake.

FINISH OPTIONS



Aged Brass (Standard)



Premium Black Overcoat Add **-BLK** to Model Number

DIMENSIONS

HEIGHT	1.25"
WIDTH	0.75"
DEPTH	0.625"
WIDTH AT EARS	1.56"



With glare shield installed

Ground stake (provided)



ML25-LED

Disc-shaped miniature lighting fixture works as an up-light (conceal within the canopy of compact plants like a Japanese maple or bonsai shrub for dramatic impact), downlight (in soffits, or above an art piece) or can be installed vertically (for step or beacon lighting). Or install horizontally to mark the edge of hardscaped spaces. The possibilities are endless.

FINISH OPTIONS



Aged Brass (Standard)



Premium Black Overcoat Add **-BLK** to Model Number

DIMENSIONS

DIAMETER	2.25"
OVERALL HEIGHT	2"
BASE DIAMETER	0.625"

SPECIFICATIONS FOR ML15-LED & ML25-LED

Material	Brass fixture. Brass glare shield (ML15). Stainless steel stake (ML15).
Mounting	ML15 has attachment ears and optional stake.
Wire Lead	10' brown 16AWG lead pre-attached to fixture.
Lens	ML25 has frosted lens.
Light Source	Integrated LED 1.3 watts, 135 lumens. Warm white 2900K. CRI > 80. Rated life 30,000 hours.



ML35-LED

A discreet integrated LED fixture for fences, deck posts, wood retaining walls and other perimeter lighting applications. Casts light downward onto paved surfaces while also grazing the wall surface.

FINISH OPTIONS



Aged Brass (Standard)



Premium Black Overcoat Add **-BLK** to Model Number

DIMENSIONS

DIAMETER	2.5"
DEPTH	1.25"

SPECIFICATIONS FOR ML35-LED

Material	Brass fixture.
Mounting	Wall plate, fixture attached with color-matched allen screws.
Wire Lead	10' brown 16AWG lead pre-attached to fixture.
Lens	Frosted polycarbonate lens.
Light Source	Integrated LED 1.3 watts, 130 lumens. Beam angle 30-degrees. Warm white 2900K. CRI > 80. Rated life 30,000 hours.



ML65

A discreet domed directional half lid fixture for hardscapes. Can be installed vertically (for step or beacon lighting). Or can be installed horizontally to mark the edge of hardscaped spaces. The potential is boundless.

FINISH OPTIONS



Aged Brass (Standard)

DIMENSIONS

DIAMETER	1.875"
DOME HEIGHT	0.55"
OVERALL HEIGHT	4"

SPECIFICATIONS FOR ML65

Material	Brass fixture.
Mounting	Optional 1.5" PVC installation sleeve.
Wire Lead	10' black 16AWG lead pre-attached to fixture.
Lens	Clear flat lens.
Light Source	Choose factory-installed MR-8 LED lamp below. Also available without lamp.

FACTORY-INSTALLED LAMP OPTION

ADD SUFFIX	WATTAGE	BEAM ANGLE	DELIVERED LUMENS	COLOR TEMPERATURE
-LED	2	45	150	2900K



UL100 UNDERWATER LIGHT



Solid brass underwater lamp built for outstanding durability and longevity for fountains, cascades, waterfalls. Submersible or install in waterfall splash areas.

FINISH



Aged Brass
(Standard)

DIMENSIONS

HEIGHT	5"
DEPTH	4.25"
WIDTH	4.25"

MOUNTING / INSTALLATION

Lead Wire 25' waterproof wire lead standard and pre-connected to fixture. Optional 50' lead available by special order. Make wire splices outside of the water feature. bt model includes power and signal combination cable.

Mounting Includes heavy brass base. Bluetooth® model includes remote antenna which must be installed outside of water feature on ground stake supplied.

MATERIAL

Housing Solid cast brass.
Aiming Knob for angle adjustment.
Socket Spring-loaded ceramic bi-pin MR16, with dual contacts and lamp clips.
Faceplate Solid cast brass, with rubber seal, with clear tempered, shock-resistant glass lens.

LIGHT SOURCE OPTIONS

Choose factory-installed MR16 lamp below, or factory-installed Bluetooth® module. Also available without lamp.

FACTORY-INSTALLED LAMP OPTIONS

ADD-SUFFIX	WATTAGE	BEAM ANGLE	DELIVERED LUMENS	COLOR TEMPERATURE	BASE COLOR CODE
-LED4W	4	45	250	2900K	BLACK
-LED4W-WF	4	60	250	2900K	BLACK
-LED5W	5	45	310	2900K	WHITE
-LED5W-WF	5	60	310	2900K	WHITE
-LED6W-F	6	45	400	2900K	BLUE

FACTORY-INSTALLED RGB LED BLUETOOTH® MODULE

Wattage: 2w - 4w, **Lumen Output:** 10lm - 430lm **Beam Spread:** 40°
CCT Options: 2700K, 3000K, 4000K **RGB Options:** unlimited color wheel, quick preset options for red, green, blue, amber and purple
Dimming: option available for every color choice.

HOW TO SPECIFY

FIXTURE	ADD FOR LIGHT SOURCE	INSTALLATION ACCESSORY
UL100	-LED Add suffix for lamp (see above) -BT for Bluetooth® RGB LED Module (blank for no lamp)	Junction box available for grouping (2) UL100-BT fixtures together (see page 77)

Example: UL100-LED



UL395-LED

HIGH LUMEN OUTPUT UNDERWATER LIGHT

High-lumen output integrated LED underwater fixture. Solid brass construction for outstanding durability and longevity. Ideal for larger water features, waterfalls and cascades, or multi-tier fountains. Completely submersible or install in water splash areas.

FINISH



Aged Brass
(Standard)

DIMENSIONS

FACE DIAMETER	5.25"
OVERALL HEIGHT	5.875"
OVERALL WIDTH	6.875"

MOUNTING / INSTALLATION

Lead Wire	25' waterproof wire lead standard and pre-connected to fixture. Make wire splices outside of the water feature.
Mounting	Includes heavy brass base for stability.
MATERIAL	
Housing	Solid cast brass.
Faceplate	Solid cast brass, with dual rubber seals, stainless screws.
Lens	Clear flat lens.
Aiming	Dual knobs tighten to hold angle adjustment and aiming.
Light Source	Integrated LED Module: 11 watts, 1200 lumens, 40 degree flood, soft white 3000K.





GOLF50-BT

Special fixture for wide, glare-free lighting of putting greens, tee boxes, sports courts, paved areas and displays. 23" stem with 45-degree angle keeps beam below eye level while wash effect provides wide dispersal.

FINISH



Aged Brass
(Standard)

DIMENSIONS

HEIGHT	25.5"
HEAD WIDTH	4"
HEAD HEIGHT	2"

MOUNTING / INSTALLATION

Wire Lead	25' wire lead, 16AWG, brown.
Mounting	Slotted 8.5" ground stake (standard), Optional surface mount canopy or Permapost heavy-duty stake. See page 76 for details.

MATERIAL

Housing	Solid cast brass.
Lens	Frosted plastic lens.

FACTORY-INSTALLED RGB LED BLUETOOTH® MODULE

Wattage: 2w - 4w

Lumen Output: 10lm - 350lm

CCT Options: 2700K, 3000K, 4000K

RGB Options: Unlimited color wheel, quick preset options for red, green, blue, amber and purple

Dimming: option available for every color choice.

HOW TO SPECIFY

CHOOSE MODEL	LIGHT SOURCE	ORDER ACCESSORIES
GOLF50	-BT for Bluetooth® RGB LED Module	Mounting (see page 76)

Example: GOLF50-BT



GOLF100

Special fixture for wide, glare-free lighting of putting greens, tee boxes, sports courts, paved areas and displays. 23" stem with 45-degree angle keeps beam below eye level while wash effect provides wide dispersal.

FINISH



Aged Brass
(Standard)

DIMENSIONS

HEIGHT	23.25"
HEAD WIDTH	3.75"
HEAD HEIGHT	2.5"

MOUNTING / INSTALLATION

- Wire Lead** 25' 16AWG wire leads, brown.
- Mounting** Slotted 8.5" ground stake (standard), Optional surface mount canopy or Permapost heavy-duty stake. See page 76 for details.

CONSTRUCTION

- Adjustability** Head incorporates locking knuckle with thumb screw for precise aiming and adjustments.
- Material** Solid brass (head and stem) Brass faceplate with rubber gasket.
- Lens** Clear lens.
- Socket** G4 Bi-Pin, Spring-loaded ceramic, with dual contacts.
- Light Source** Standard G4 LBIPIN-LED-200lm 2.5 watt 2700K factory installed. Optional no lamp.

HOW TO SPECIFY

MODEL	ADD FOR LIGHT SOURCE	ORDER ACCESSORIES
GOLF100	-LED for LBIPIN-LED-200lm 2.5 watt 2700K lamp (blank for no lamp)	Mounting (see page 76)

Example: GOLF100-LED



POWER & CONTROL

From basic to intelligent transformers and controls,
Alliance brings flexibility and reliability



it2 INTELLIGENT TRANSFORMERS

Next-generation transformer and app-driven control system in a single easy-to-install package. Controlled with the Alliance ITPro app through Bluetooth® or WiFi for remote on/off control and set-up of lighting schedules. Ability to manage up to 3 different independently-scheduled lighting zones in a single transformer for maximum flexibility and energy savings.

DIMENSIONS IT2-150 WATT

HEIGHT ON WALL	14.75"
WIDTH	5.75"
DEPTH	5.75"

DIMENSIONS IT2-300 WATT

HEIGHT ON WALL	16.25"
WIDTH	7.75"
DEPTH	5.25"

KEY FEATURES:

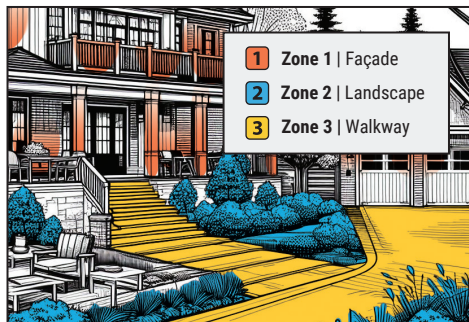
- App-controlled for on/off remote control and scheduling
- Up to 3 individually-scheduled zones for maximum lighting control (example: facade, landscape, walkway)
- Astronomic timing (sunrise/sunset adjusted automatically), plus clock-based on/off
- Settings saved to the cloud in case of power interruption
- Maximum control range. Discreet integrated external antenna plus dual control with Bluetooth® or WiFi. (WiFi is optional, not required)
- Digital power meter (in app) displays real-time power consumption and history
- Angled terminal strip for easy wire connections, eliminates blind spots
- Removable bottom panel, 5 knockouts for wire connections
- Heavy-duty stainless-steel cabinet with integrated mounting bar, lockable
- Integrated short circuit and overload protection
- Includes 5' grounded heavy-gauge power cord
- ETL tested, in conformance to ANSI/UL 1838

ELECTRICAL SPECIFICATIONS:

- 150 watt model has three 14-volt taps
- 300 watt model has three 14-volt taps
- Use any combination of terminal lugs but do not exceed transformer's rated wattage on any lug

CONTROL UP TO 3 DIFFERENT ZONES

- Set different types of lighting to different schedules to accommodate activities



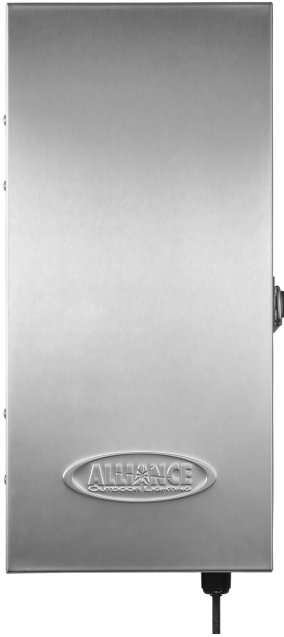
HOW TO SPECIFY

CHOOSE MODEL

IT2-150 150 Watt

IT2-300 300 Watt





XF SERIES TRANSFORMERS

The heart of a low-voltage outdoor lighting system is the transformer. Our rugged professional-grade multi-tap transformer sets the standard for ease of installation and adaptability to standard and app-based controls.

DIMENSIONS 150 WATT

HEIGHT ON WALL	14.37"
WIDTH	4.25"
DEPTH	5.12"

DIMENSIONS 300/600 WATT

HEIGHT ON WALL	16"
WIDTH	7.25"
DEPTH	5.12"

KEY FEATURES:

- Fully-potted, insulated, single-core transformer
- Easy on/off, secondary breaker switches on each common tap
- Two common lug terminals
- Amp loop to check the primary amperage on the transformer
- Accepts plug-in-timers, has direct photocell connection
- Angled terminal strip for easy wire connections, eliminates blind spots
- Heavy-duty stainless-steel cabinet with integrated mounting bar, lockable
- Removable bottom panel, 5 knockouts for wire connections
- Integrated short circuit and overload protection
- Includes 5' grounded heavy-gauge power cord
- ETL tested, in conformance to ANSI/UL 1838

ELECTRICAL SPECIFICATIONS:

- 150 watt model has 4 taps: 12, 13, 14, 15 volts
- 300 watt model has 4 taps: 12, 13, 14, 15 volts
- 600 watt model has 6 taps: 12, 13, 14, 15, 16, 17, 18 volts
- Use any combination of terminal lugs but do not exceed transformer's rated wattage on any lug

HOW TO SPECIFY

CHOOSE MODEL	ORDER CONTROLS SEPARATELY
XF150 150 Watt XF300 300 Watt XF600 600 Watt	iTimerPRO app-based control TIMER mechanical timer PC plug-in photocell





iTimerPRO APP-BASED CONTROL

Today's lighting users want more convenience. iTimerPRO makes it easy to offer a full suite of digital features with a standard transformer, including app-based remote control and on-screen programming. It is also a popular way to quickly upgrade existing transformers to app-based controls. It is compatible with a wide range of existing transformer brands. Simply unplug the existing mechanical timer and connect iTimerPRO.

DIMENSIONS

HEIGHT	5"
WIDTH	3"
DEPTH	2"
ANTENNA	5.5"

KEY FEATURES:

- Convenient, app-based programming and control of lighting with Alliance app
- Set, change, & view schedules on mobile device or tablet. Activate lights remotely on mobile device
- Automatic astronomic (sunrise/ sunset) adjustment (no photocell needed)
- Bluetooth® based control. No need to access customer's WiFi
- Outstanding range from external antenna, control/program from indoors
- Upgrade existing transformers to app control
- Includes 32" grounded heavy-gauge power cord
- Wall-mounts separately from transformer with convenient attachment tabs
- Rated 120 volt, 15A

HOW TO SPECIFY

CHOOSE MODEL

ITIMERPRO 1 Output

ITIMERPRO-DUO 2 Outputs



TF SERIES TRANSFORMERS

Offers an outstanding value with a stainless steel cabinet or plastic housing, easy wire connections, and built-in photocell and timer.

DIMENSIONS TF200 AND 300

HEIGHT ON WALL	9.25"
WIDTH	5.75"
DEPTH	3.25"

DIMENSIONS TF 150

HEIGHT ON WALL	6.75"
WIDTH	4.25"
DEPTH	3.25"

TF300 AND TF200 FEATURES:

- Toroidal transformer
- Stainless steel cabinet
- Includes on-board photocell and digital timer
- 300 watt model has multiple taps (12, 14 volts)
- 200 watt model has 12 volt tap only
- 5' heavy-gauge power cord with grounded plug
- DOE and CEC compliant
- ETL listed

TF150 FEATURES:

- Plastic housing
- Includes on-board photocell and digital timer
- DOE and CEC compliant
- ETL listed



TF150



TF200/300

CONTROL AND WIRING ACCESSORIES



PC
Photocell mounts to side of Alliance XF transformers to provide automatic dusk-to-dawn control. Plugs directly into the photocell connector inside for fast set-up.



TIMER
Mechanical timer, plugs into outlet inside the XF series transformer.



CS100
Buried connection point for central point (spider) wiring. Includes two brass connectors with set screws and plastic lug caps in PVC housing. When installed: 2.5" diameter x 9.15" depth.



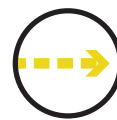
BT SYSTEM COMPONENTS AT A GLANCE



Bluetooth Signal

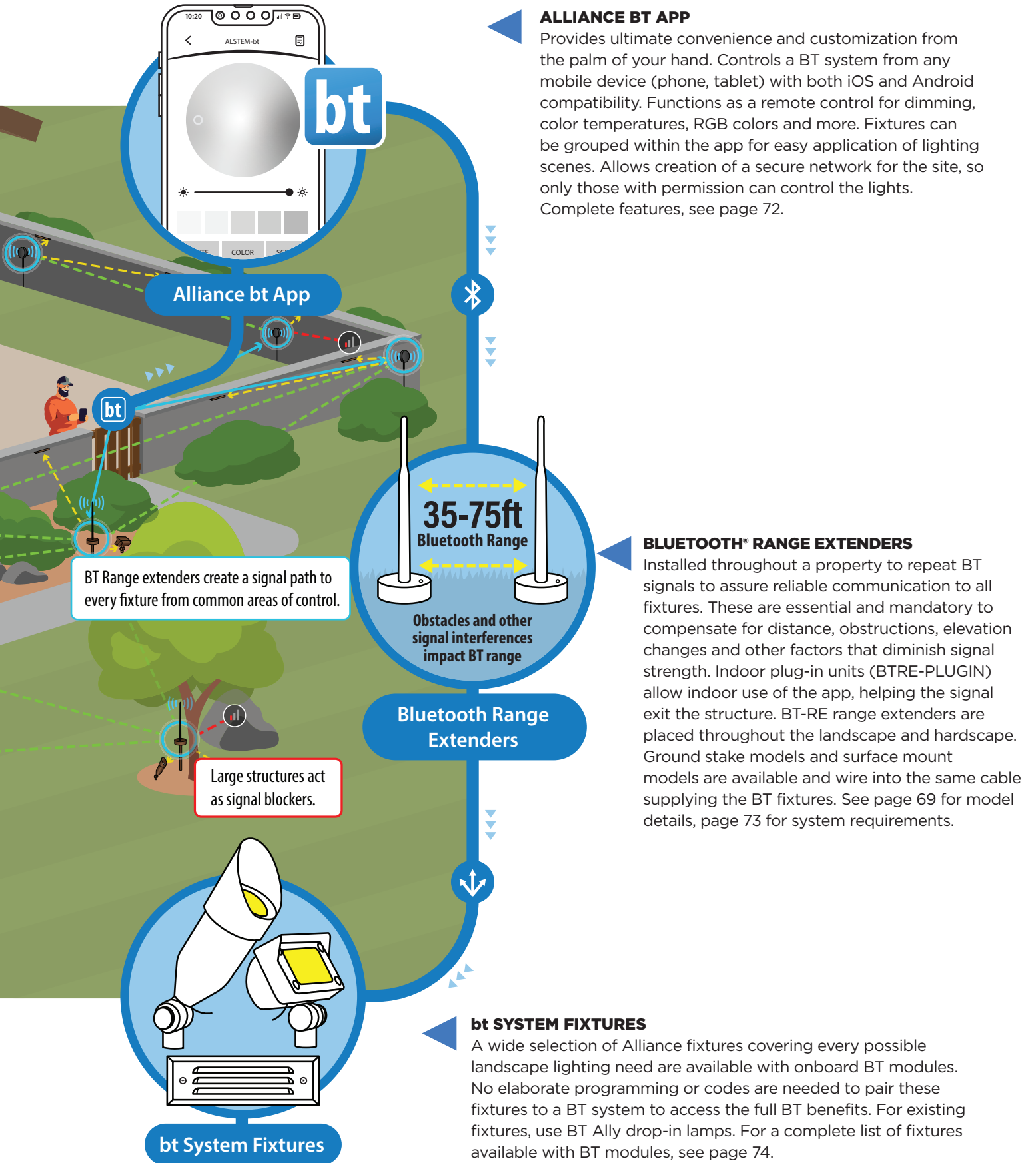


**bt Range Extender
Communication**



**bt Range Extender
to Fixture Signal**

BT SYSTEM COMPONENTS AT A GLANCE

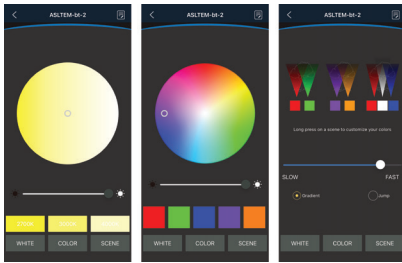




JOIN THE BT REVOLUTION - CREATE THE ULTIMATE LIGHTING EXPERIENCE

Advance your landscape lighting designs to the next level with the full capabilities of the Alliance BT System. Move to advanced capabilities that put a landscape into a whole new light.

Alliance's BT system brings a wide suite of capabilities in a system that is easy and economical to install. It does not require a specific controller or transformer, and can be adapted to sites, including those with existing low-voltage landscape lighting.



KEY BT CAPABILITIES AND BENEFITS:

- **Dimming** - control individual fixture intensity from 1% to 100% to dramatically change the appearance and make overall lighting more pleasing.
- **Color temperature control** - tune individual fixture output infinitely from warm 2700K to silvery moonlight 4000K. Amplify architectural colors and tones. Invigorate vegetation. Emulate moonlight.
- **RGB color control** - paint a landscape with rich, colorful light. Choose from up to 30,000 different custom colors, plus easy pre-set colors.
- **Scene/theme creation** - create custom lighting schemes to suit specific times of day, activities, moods or events. Adjust fixture color and dimming to create romantic, festive or relaxing scenes. Celebrate family events, holidays, sporting events with customized color.

DOWNLOAD THE FREE BT APP



EXPERIMENT WITH LIGHT!

Use the BT system to expand the quality of your lighting designs and increase your customers' enjoyment of their lighting investment. Here are some themes to try:

- Softer lighting with a touch of color can be relaxing or romantic.
- Bright saturated colors are festive and celebratory, perfect for sports night or pool night
- Dimming and color together particularly effective for outdoor gatherings, as it can help bring focus to seating and task areas while using muted colored lighting for perimeter ambiance.
- Holiday themes: Christmas, Hanukkah, Halloween, Valentines Day, Independence Day, etc.



BT RANGE EXTENDERS

Range extenders are a MUST for every BT System to operate reliably. They repeat and strengthen the communication between all system components, operating as a “mesh network”.

Communication signal strength can be reduced by physical obstructions (buildings, landscape features, etc.), intermittent communication interference (competing signals, static, signal noise, magnetic fields, etc.), weather and more.

You want a reliable installation! Avoid parts of your BT fixture network going off-line by creating a strong network of range extenders.

Range extenders are assigned to a specific network. If you have multiple networks on a property, separate range extender groups will be needed for each network.



BTRE

Stake mounted range extender installs in the landscape along your wire cable path. Installed where spacing between fixtures is significant, where elevation or obstructions might interrupt signal and simply to strengthen the overall network. Nestle among landscape foliage, do not place behind physical obstructions like walls, stones, etc.

- Includes 8" slotted ground stake and 5' wire lead. Other mounting options offered and option to add height with risers of various lengths, see page 76
- Handsome aged brass cap adds durability
- External antenna, 8" height 5 dB, 2.4 GHz
- Indicator light displays green when RE is active in a network
- 1 watt



BTRE-SM

Surface mounted range extender ideal for use in hardscape areas or on the exterior walls of structures. Installed where spacing between fixtures is significant, where elevation or obstructions might interrupt signal and simply to strengthen the overall network.

- Includes mounting ears for attachment to vertical surfaces and 5' wire lead. Add removable ½" threaded base to attach to RMB canopy mount or another base.
- Indicator light displays green when RE is active in a network.
- 1 watt



BTRE-PLUGIN

Indoor range extender plugs into a standard 120V grounded receptacle. Intended to help carry signal from indoors to the landscape. (For example, when adjusting lighting on a cold winter night). A must for residential installations.

- Allows outlet to continue to be used for other purposes (10A limit).
- LED indicator light displays blue when RE is active in network

BT SYSTEM FIXTURES

Alliance offers a wide selection of fixtures with onboard BT modules. Specification information for each is located on the specific fixture page.

ACCENT/UPLIGHT



BL200-BT
PG 11



BL400-BT
PG 14



BL900-BT
PG 15



AL100
PG 18



AL150
PG 18



AL250
PG 18



AL300
PG 18

AREA & PATH

AREA & PATH



AL400
PG 18



AL500
PG 18



AL550
PG 18



PL100-BT
PG 22



PL300-BT
PG 24

IN-GROUND



GL100 SERIES
PG 30



GL300 SERIES
PG 32



WL400-BT
PG 35

WALL WASH



FL50-BT
PG 47



FL200-BT
PG 49



SL25-BT
PG 40



SL35-BT
PG 40



SL60-BT
PG 39



SL70-BT
PG 39



SL80-BT
PG 39



WS350-BT
PG 45

HARDSCAPE

DOWN LIGHTS



DL200-BT
PG 53



HL100-BT
PG 54



HL200-BT
PG 55



UL100-BT
PG 60



GOLF50-BT
PG 62

SPECIALTY

LAMPS



BT-ALLY-MR16
PG 78



BT-ALLY-G4
PG 78



BT-ALLY-PAR36
PG 78

BT SYSTEM INSTALLATION REQUIREMENTS

Communication Distances bt Fixtures have a Bluetooth® range of 5-20 feet in optimal conditions and bt range extenders have a Bluetooth® range of 35-75 feet in optimal conditions. Smart phones have a Bluetooth® range of 10-30 feet in optimal conditions. Bluetooth® range is affected by natural obstacles including elevation, rocks and foliage, as well as buildings, hardscapes, patio covers, and interference from other electrical (pool equipment) and wireless devices.

All Sites Require Range Extenders bt Range extenders are required for proper operation. Space them throughout a property (see diagram, page 70). A typical residential lot will have 4 bt range extenders in the front yard and 4 bt range extenders in the backyard. Larger properties (with longer distances) should have more. Consider the arrangement of fixtures and size of the property to determine how signal can be repeated. (There is no rule based on number of fixtures, instead measure spacing and layout.) If the app will be used from indoors during inclement weather, indoor range extenders are recommended to carry through walls. For hardscape, surface-mounted range extenders are helpful together with hardscape lights.

bt Fixtures Require between 10 to 14 volts to communicate over 14 volts will damage the components of a bt module. Place no more than 8 bt fixtures on a wire run.

The bt System does not require a Special Transformer, only that the transformer output can deliver 10-14 volts at the fixture.

INSTALLATION TIPS

- 1) **Triangulate bt range extenders** so that each has a line of sight to at least 2 other range extenders. This strengthens the Bluetooth® mesh network and increases communication to the bt fixtures in range.
- 2) **Signal strength is aided by elevation.** Where possible, install range extenders in trees, on hilltops, on fences, roofs, etc. For ground-stake models use a RISER (page 77) for height.
- 3) **Each bt Fixture has an antenna.** Leave these exposed. Do not cut, bury, or tuck into lids/knuckles, etc. Hardscape fixtures have internal antennas, with those use surface-mounted range extenders to aid communication.
- 4) **Set Up Secured Network(s) in the App.** Secured networks help to block those without permission from accessing the bt system, and separate fixtures. You can create multiple secured networks for a property, if desired. (e.g. front yard and back yard). Range extenders are assigned to a specific secure network, and cannot be shared across different secure networks.
- 5) **Review System Operation with the Property Owner.** Test operation from where the property owner will use the app with property owner's device(s) from: indoors, outdoor seating areas, building entrances, garages. This avoids callbacks related to function and use. Provide a copy of our Property Owner User Guide which describes app functions, scene options, accessing the secure network, and signal tips.



VISIT OUR WEBSITE TO DOWNLOAD A COMPLIMENTARY COPY OF OUR BT SYSTEM HOW-TO GUIDE



SLOTTED PLASTIC GROUND STAKES

Standard with most ground-mounted fixtures. Brown for aged brass and black for black overcoat fixtures.

- STAKE-P1** 8" standard stake
- STAKE-P2** 8.5" large stake
- STAKE-P3** 14" giant stake



PERMAPOST GROUND STAKES

Provides deep anchoring for fixtures in high traffic areas. Helps maintain fixture position and aiming when bumped by pedestrians and maintenance equipment. Included with ALSTEM60 60" stem. 18.5" depth x 3" diameter. Brass locking nut and cap. PVC body. Plastic stabilizing fins.

Model: **PERMAPOST**



ROUND SURFACE / CANOPY MOUNTING BASE

Attach any standard 1/2" threaded fixture to a flat surface (deck, wall, wide rail, etc.). Includes opening for wire exit. Includes 3 wood screws. Can also be anchored with other fasteners at your option. Brass. 1/2" overall height.

- RMB** 3" round mounting base, aged brass
- RMB-BLK** 3" round mounting base, black overcoat



GUTTERMOUNT

Using the gutter mount to attach dormer or façade lighting to the upper story of a building eliminates the need to disturb the roofing surface. It traverses the width of a standard metal gutter and securely supports the fixture. (Fixture pictured sold separately) 3.3" length.

Model: **GUTTERMOUNT**



T-ADAPTER

Use with riser of your choice to create dual-head accent fixtures for special applications that require precise aiming and light control. Recommended with BL50 (pictured).

Model: **T-ADAPTER**



L-ADAPTER

Pair with the riser of your choice to create an aimable area light. Popular solution for lighting inclined driveways where wide dispersal and glare control is required. Recommended with BL50, BL100 or BL200 (pictured).

Model: **L-ADAPTER**



UNDERWATER JUNCTION BOX

IP68 rated underwater junction box that allows for (2) UL100-BT's to be connected to a single external antenna. Includes 10' of power and signal combination cable.



Model: **UL100-BT-JXN**

Example of UL100-BT-JXN connected



A-LOC LOCKING WATERPROOF SPLICES WITH CRIMP SLEEVE

Secure: Locking bolt holds splice securely in place, no pull-out. Tightens down onto wire jacket, not the copper wire ends.

Easy installation: strip wires, twist together, crimp, insert into splice, tighten "bolt".

Clean, organized installation: sides of splices interlock/nest for a neat installation.

Weatherproof: Suitable for direct-burial, outdoor applications. Do not use underwater.

Model: **A-LOC-50** Container of 50 splices.



EXTENSION RISERS

Provides additional height to raise fixture out of plantings, to respond to changes in terrain or to aid in aiming for wall washing or signage illumination. Can also tune fixture height on existing installations to accommodate plant growth. Male end attaches to mounting, female end to fixture.

- RISER6** 6" fixed riser, aged brass
- RISER12** 12" fixed riser, aged brass
- RISER18** 18" fixed riser, aged brass
- RISERADJ-BRASS** Adjustable riser 16" minimum, 28.75" maximum

For risers in black overcoat add -BLK to model number. (RISERADJ not available in -BLK)



BT ALLY APP-CONTROLLED COLOR-CHANGING LAMPS

Add the control capabilities of Alliance's BT System to existing lighting fixtures with BT Ally drop-in lamps. Like BT fixtures, these lamps offer RGB color adjustability, tunable white and dimming capability.



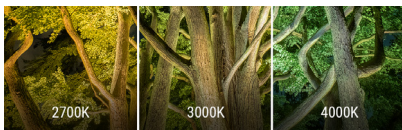
Dimming - from 1% to 100% to dramatically change the appearance and make overall lighting more pleasing

Color temperature control - tune individual fixture output infinitely from warm 2700K to silvery moonlight 4000K. Amplify architectural colors and tones. Invigorate vegetation. Emulate moonlight.

RGB color control - paint a landscape with rich, colorful light. Choose from up to 30,000 different custom colors, plus easy pre-set colors.

Grouping - create custom lighting schemes to suit specific times of day, activities, moods or events. Adjust fixture color and dimming to create romantic, festive or relaxing scenes. Celebrate family events, holidays, sporting events with customized color.

Remote Control - Control lamps (on/off) individually from app.



Sunset Warm to Moonlight Bright



Unlimited Color Wheel, Quick Pre-Set Options

SPECIFICATIONS

- Operates with Alliance BT app from any mobile device (phone, tablet) with either iOS and Android
- Operating Voltage: 10-14 volts
- CRIRa>80
- Rated hours: 30,000
- Ambient operating temperature: < 160F

IMPORTANT NOTE

BT-ALLY-G4 does not fit these fixtures:

HSC-PL1, PL200, PL250, PL300, SL150, SL70, PAL705

MODELS

BT-ALLY-MR16 Adjustable 2-4 watt MR16 RGB CCT lamp, 40 degree flood, 10-430 lumens

BT-ALLY-G4 Adjustable 1-2.5 watt G4 RGB CCT lamp, 360 degree spread, 10-250 lumens (Dimensions: 2.8125" Height x 0.9375" Diameter)

BT-ALLY-PAR36 Adjustable 2-7 watt PAR36 RGB CCT lamp, 45 degree flood, 15-460 lumens



Add the app-control capabilities of Alliance's bt System to existing lighting fixtures with bt ALLY drop-in lamps. Lamps are available to fit all standard fixture types.



BT-ALLY-MR16



BT-ALLY-G4



BT-ALLY-PAR36

ALLIANCE MR-16 LED LAMPS



LMR16-LED-4W-NS



LMR16-LED-6W-F

MODEL	WATTAGE	BEAM ANGLE	DELIVERED LUMENS	COLOR TEMP.	BASE COLOR
LMR16-LED-4W-NS	4	15° Narrow Spot	250	2900K	Black
LMR16-LED-4W-F	4	45° Flood	250	2900K	Black
LMR16-LED-4W-WF	4	60° Wide Flood	250	2900K	Black
LMR16-LED-5W-NS	5	15° Narrow Spot	310	2900K	White
LMR16-LED-5W-F	5	45° Flood	310	2900K	White
LMR16-LED-5W-WF	5	60° Wide Flood	310	2900K	White
LMR16-LED-6W-F	6	45° Flood	400	2900K	Blue

Note:

4 watt models are approximately equivalent output to halogen 20 watt.

5 watt models are approximately equivalent output to halogen 35 watt

6 watt model is approximately equivalent output to halogen 50 watt

ALLIANCE MR-11 & MR-8 LED LAMPS



LMR11-LED-4W-F



LMR8-LED-150LM

MODEL	WATTAGE	BEAM ANGLE	DELIVERED LUMENS	COLOR TEMP.
LMR11-LED-4W-F	4	45° Flood	175	2900K
LMR8-LED-150LM	2	45° Flood	150	2900K

ALLIANCE PAR36 LED LAMPS



MODEL	WATTAGE	BEAM ANGLE	DELIVERED LUMENS	COLOR TEMP.	BASE COLOR
LPAR36-LED-4W-F	4	20° Flood	250	2800K	Gray
LPAR36-LED-4W-WF	4	40° Wide Flood	250	2800K	Gray
LPAR36-LED-8W-F	8	20° Flood	300	2800K	Black
LPAR36-LED-8W-WF	8	40° Wide Flood	300	2800K	Black
LPAR36-LED-10W-F	10	30° Flood	400	2800K	Blue
LPAR36-LED-10W-WF	10	45° Wide Flood	400	2800K	Blue

Note:

4 watt models are approximately equivalent output to halogen 20 watt.

8 watt models are approximately equivalent output to halogen 35 watt

10 watt model is approximately equivalent output to halogen 50 watt

ALLIANCE G4 BIPIN LED LAMPS

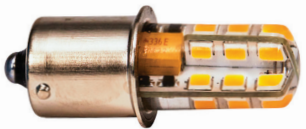


MODEL	WATTAGE	DELIVERED LUMENS	COLOR TEMP.
LBIPIN-LED-200lm	2.5	200	2700K
LBIPIN-LED-250lm	3	250	2700K
LBIPIN-LED-350lm	3.5	350	2700K



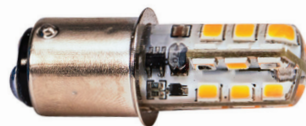
ALLIANCE 3156 WEDGE BASE LED LAMPS

MODEL	WATTAGE	DELIVERED LUMENS	COLOR TEMP.
L3156-LED-200lm	2.5	200	2700K
L3156-LED-250lm	3	250	2700K



ALLIANCE SINGLE CONTACT BAYONET LED LAMPS

MODEL	WATTAGE	DELIVERED LUMENS	COLOR TEMP.
LBA15S-LED-200lm	2.5	200	2700K



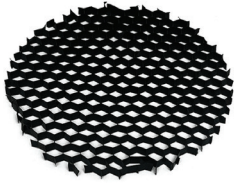
ALLIANCE DUAL CONTACT BAYONET LED LAMPS

MODEL	WATTAGE	DELIVERED LUMENS	COLOR TEMP.
LBA15D-LED-200lm	2.5	200	2700K

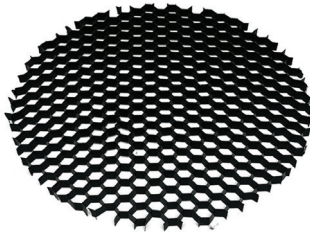


ALLIANCE T5 WEDGE BASE LED LAMPS

MODEL	WATTAGE	DELIVERED LUMENS	COLOR TEMP.
L92IT5-LED-200lm	2.5	200	2700K



MR16



PAR36



MR16



PAR36



HEX LOUVERS

Used for controlling sideways glare from lamps beyond that accomplished by the fixture shroud. Architectural lamps like PAR and MR lamps emit some spill light beyond the face of the lamp which can be further controlled with a hex louver.

HEXLouver-MR16 MR-16 size, fits Alliance fixtures using a MR16 lamp.

HEXLouver-PAR36 PAR-36 size, fits Alliance fixtures using an PAR36 lamp.

FROSTED LENSES

Frosted lenses create a more diffuse spread of light and reduce scallop effects. Preserves the output of the beam while removing striation and halation. Particularly effective in sign lighting and wall-washing.

MR16LENS-FROSTED fits Alliance fixtures that accept an MR-16 lamp.

PAR36LENS-FROSTED for fixtures using PAR36 lamps.

INTERCHANGEABLE LIDS FOR WELL LIGHTS

Field install a different color or style lid to update our traditional CGWL01 well lights to your project's requirements.

MODELS:

CGWL01-Grate-BLK

CGWL02-Top

CGWL02-Top-BLK

LOOKING TO CREATE CUSTOM LIGHTING EFFECTS?

Contact our technical team for information on other custom lenses, louvers and accessories for your specific needs.

GREAT SALES TOOL

A demo kit is a great way to expand your lighting business. Setup the kit for the customer to show how great lighting enhances the way they experience their property at night. Expand your demokit to show different applications of lighting.

CONTENTS

DEMOKIT8-bt Includes:

- (6) BL200-bt
- (2) ALSTEM12-bt
- (2) AL100 Hats
- (1) bt-RE
- (1) TF150 Transformer
- (2) Wire Splitters
- (12) Extra Connectors
- Storage Case

DEMOKIT8 Includes:

- (6) BL200-LED4W
- (2) ALSTEM12-LED
- (2) AL100 Area Light Hats
- (1) TF150 Transformer
- (2) Wire Splitters
- (12) Extra Connectors
- Storage Case

Demo Kit Features:

- Our industry first double wire leads: fixtures with two 16 awg (UL Listed) brown wire leads pre-connected to the fixture, one 18" and one 25' in length.
- Quick connecting adapters at each wire end making connections fast and easy (not intended for in ground burial)
- A TF150 transformer with an 18" wire lead pre-connected with quick connect adapter
- A compact storage case making the kit easy to store and transport
- Extra quick connectors



DEMOKIT8-bt
bt Demonstration Kit

DEMOKIT8
LED Demonstration Kit

Alliance Outdoor Lighting warrants its products against defects in material and workmanship. Without charge, Alliance Outdoor Lighting will either repair or replace (Alliance Outdoor Lighting reserves the right to decide between repair or replacement) any properly installed Alliance Outdoor Lighting product that fails under normal operating conditions within the specified warranty period. Damage due to acts of nature, such as, but not limited to, lightning, flooding, explosions and earthquakes, are not covered.

- **Brass, Copper & Bronze Fixtures:**

All have a lifetime warranty for all castings and housings.

- **IT2 Series Transformers:**

All IT2 series transformers carry a lifetime warranty on enclosures. All transformer windings carry a lifetime warranty.

- **XF Series Transformers:**

All XF series transformers carry a lifetime warranty on enclosures. All transformer windings carry a lifetime warranty.

- **TF Series Transformers:**

2 year warranty.

- **bt and Integrated LED fixtures:**

All Alliance LED integrated fixtures carry a 10 year warranty.

- **bt and LED Lamps:**

10 year warranty.

- **iTimerPRO:**

10 year warranty.

- **Timers and Photocells:**

Do not carry a warranty.

All products are warranted from the date of invoice, provided it is returned to the Alliance Outdoor Lighting distributor from where it is purchased. Our factory inspection determines it to be defective under the terms of the warranty. This warranty covers only equipment manufactured by Alliance Outdoor Lighting and does not extend to transportation, installation, labor compensation, or replacement charges, nor does it apply to any equipment of another manufacturer used in conjunction with Alliance Outdoor Lighting equipment.

NOTE: All Alliance Outdoor Lighting products are designed to be repaired in the field by a qualified lighting installer. All service parts are readily available and we encourage field repairs as a significant cost and labor savings which can be realized by the installer. All warranted components, as stated in the above warranty, which are installed in the field, will be honored.





ALLIANCE

OUTDOOR LIGHTING

West Coast Hub: Temecula, CA
East Coast Hub: Sanford, FL
www.allianceoutdoorlighting.com