



BT RANGE EXTENDERS FOR EVERY LANDSCAPE CREATING A STRONG RELIABLE LIGHTING NETWORK



BTRE

Stake mounted range extender installs in the landscape along your wire cable path. Nestle among landscape foliage, do not place behind physical obstructions like walls, stones, etc.



BTRE-SM

Surface mounted range extender ideal for use in hardscape areas or on the exterior walls of structures.



BTRE-PLUGIN

Indoor range extender plugs into a standard 120V grounded receptacle. Intended to help carry signal from indoors to the landscape. A must for residential installations.

THE MOST IMPORTANT COMPONENTS OF A BT SYSTEM

Range extenders are a MUST for every BT System to operate reliably. They repeat and strengthen the communication between all system components, operating as a “mesh network”.

Communication signal strength can be reduced by physical obstructions (buildings, landscape features, etc.), intermittent communication interference (competing signals, static, signal noise, magnetic fields, etc.), weather and more.

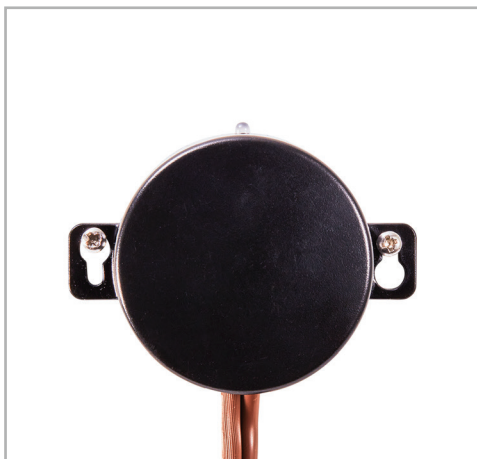
You want a reliable installation. Avoid parts of your BT fixture network going off-line by creating a strong network of range extenders.

FEATURES & SPECIFICATIONS



Model: **BTRE**

- Includes 8.5" slotted ground stake and 5' wire lead.
- Aged brass cap for durability.
- External antenna, 8" height 5 dB, 2.4 GHz.
- Indicator light displays green when BTRE is active in a network.
- 1 watt



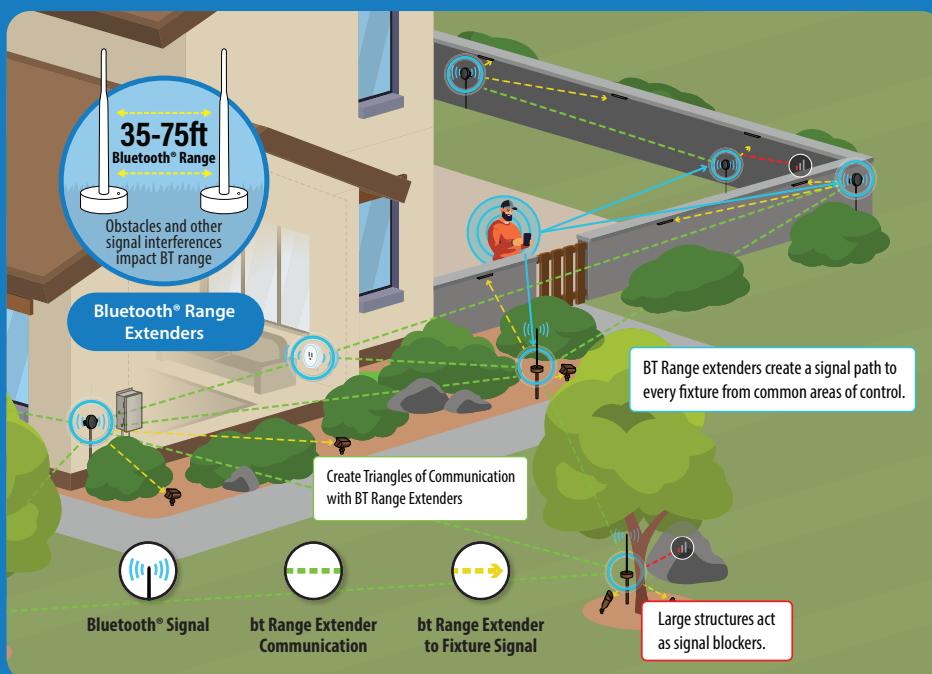
Model: **BTRE-SM**

- Includes mounting ears for attachment to vertical surfaces and 5' wire lead
- Add removable 1/2" threaded base to attach to RMB canopy mount or another base.
- Indicator light displays green when BTRE is active in a network.
- 1 watt



Model: **BTRE-PLUGIN**

- Allows outlet to continue to be used for other purposes (10A limit).
- Indicator light displays blue when BTRE is active in a network.
- 120V grounded receptacle.



BT SYSTEM REQUIREMENTS

BT mobile app, ALLIANCE BT fixtures and BT range extenders are the core requirements for a reliable installation.

All sites require range extenders for proper operation. Typical residential lot will have 4 BT range extenders in the frontyard and 4 BT range extenders in the backyard. Larger properties (with longer distances) should have more.

Installation tips: (1) Triangulate BTRE's, (2) Elevate BTRE's, (3) Make sure BT fixtures have their antennas exposed, (4) Set up secured networks in the BT app, (5) review the BT system with the property owner.